

开元壹号62#地块50#公寓楼公共区域室内装饰设计

效果图方案 2022.09

CONTENTS

This is a good space for a short subtitle

01

项目概况分析

Project Overview Analysis

02

设计理念

Design concept

03

平面分析

Plane analysis

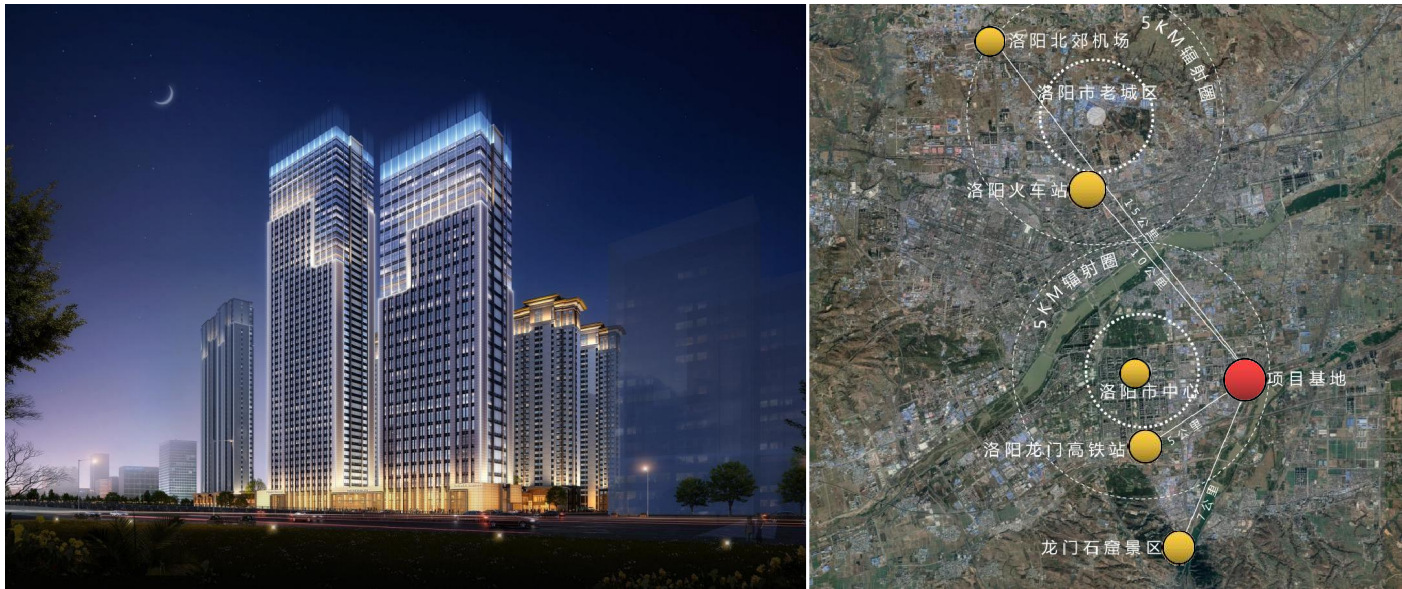
04

效果图展示

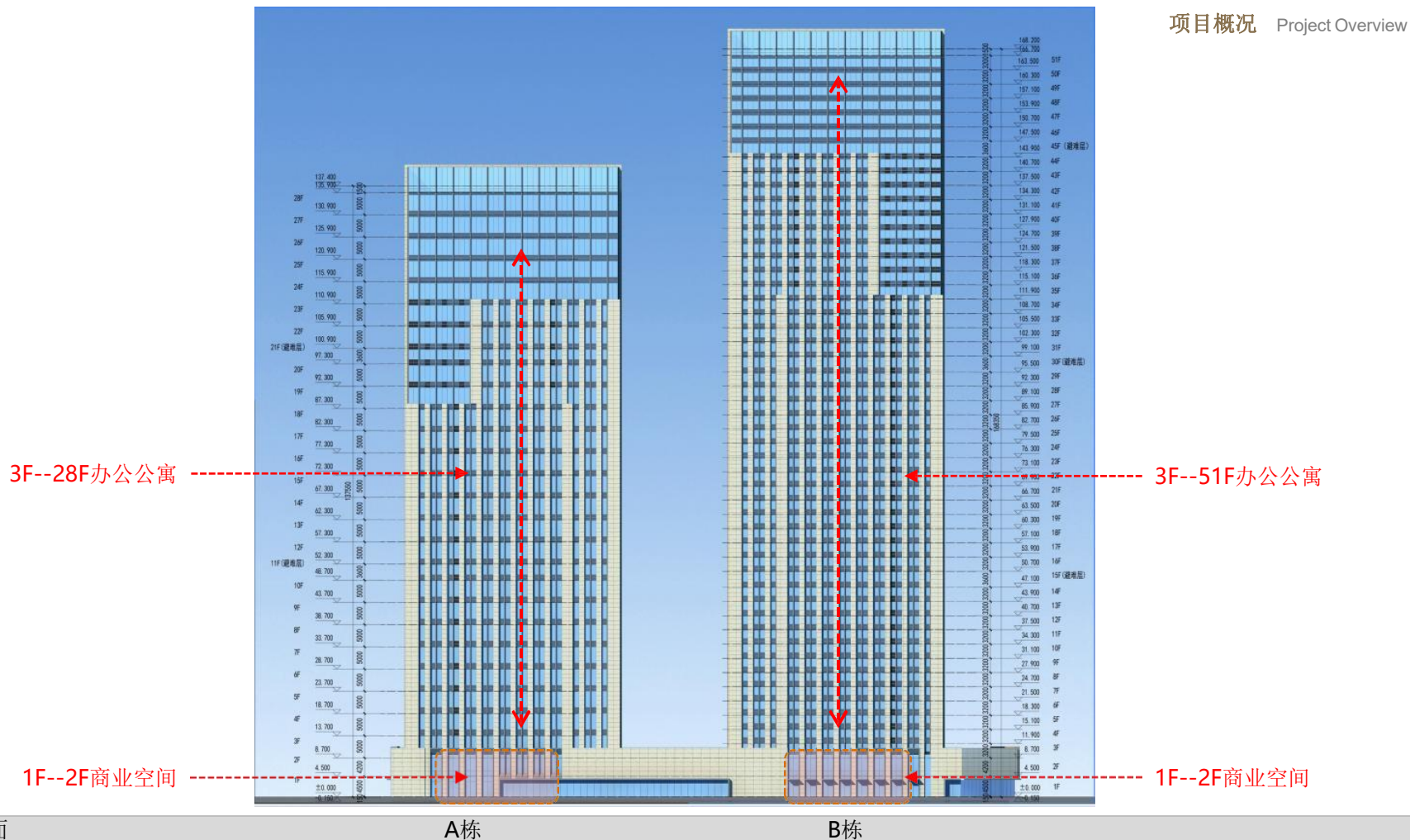
Effect drawing

01

项目概况分析
Project Overview Analysis



- 62#地块位于开元大道与长夏门街交汇处，洛阳市新区核心区域，开元大道城市主轴线上，地理位置优越、交通便利、周边配套成熟完善，临众多历史古迹、绿地公园、千亩生态植物园、湿地公园等，人文底蕴深厚。
- Plot 62 # is located at the intersection of Kaiyuan Avenue and Changxiaomen Street, the core area of Luoyang New District, and on the city main axis of Kaiyuan Avenue, facing numerous historical monuments, Green Park, thond-acre ecological botanical garden, Wetland Park, and so on, rich cultural heritage.



3F--28F办公公寓

3F--51F办公公寓

1F--2F商业空间

1F--2F商业空间

南立面

A栋

B栋



建筑特色

生态 共享 开放

建筑体块与绿色渗透融合
容纳着建筑周边的一草一木

**Building blocks and green infiltration are
integrated to contain every plant and tree
around the building**

公寓/商业空间
Apartment / Commercial space



旅行租住人士 CUSTOMER OF TRAVEL



投资客 INVESTOR



固定户主 RESIDENT



商业顾客 CUSTOMER OF COMMERCE



年轻

朝气

创新意识

审美能力

品味

02

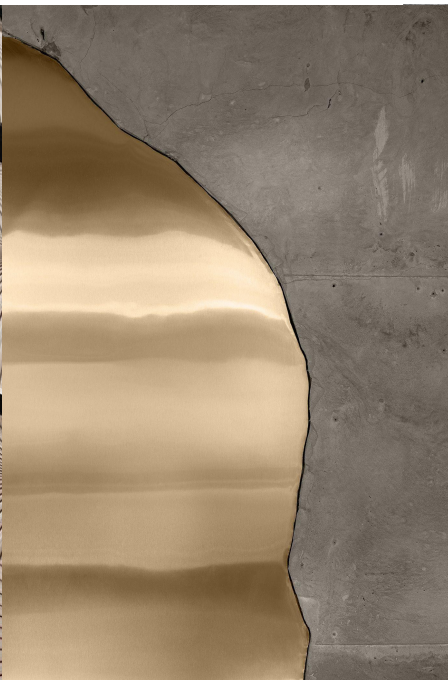
设计理念
Design concept



将当地的“建筑、石窟、伊河”等具有代表性的元素融入本案之中



色彩



材质



家具



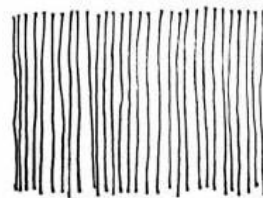
装置艺术



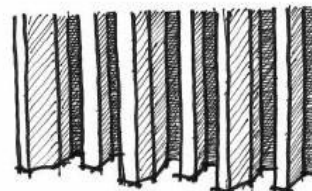
幕墙肋造型&演变



阵列排序



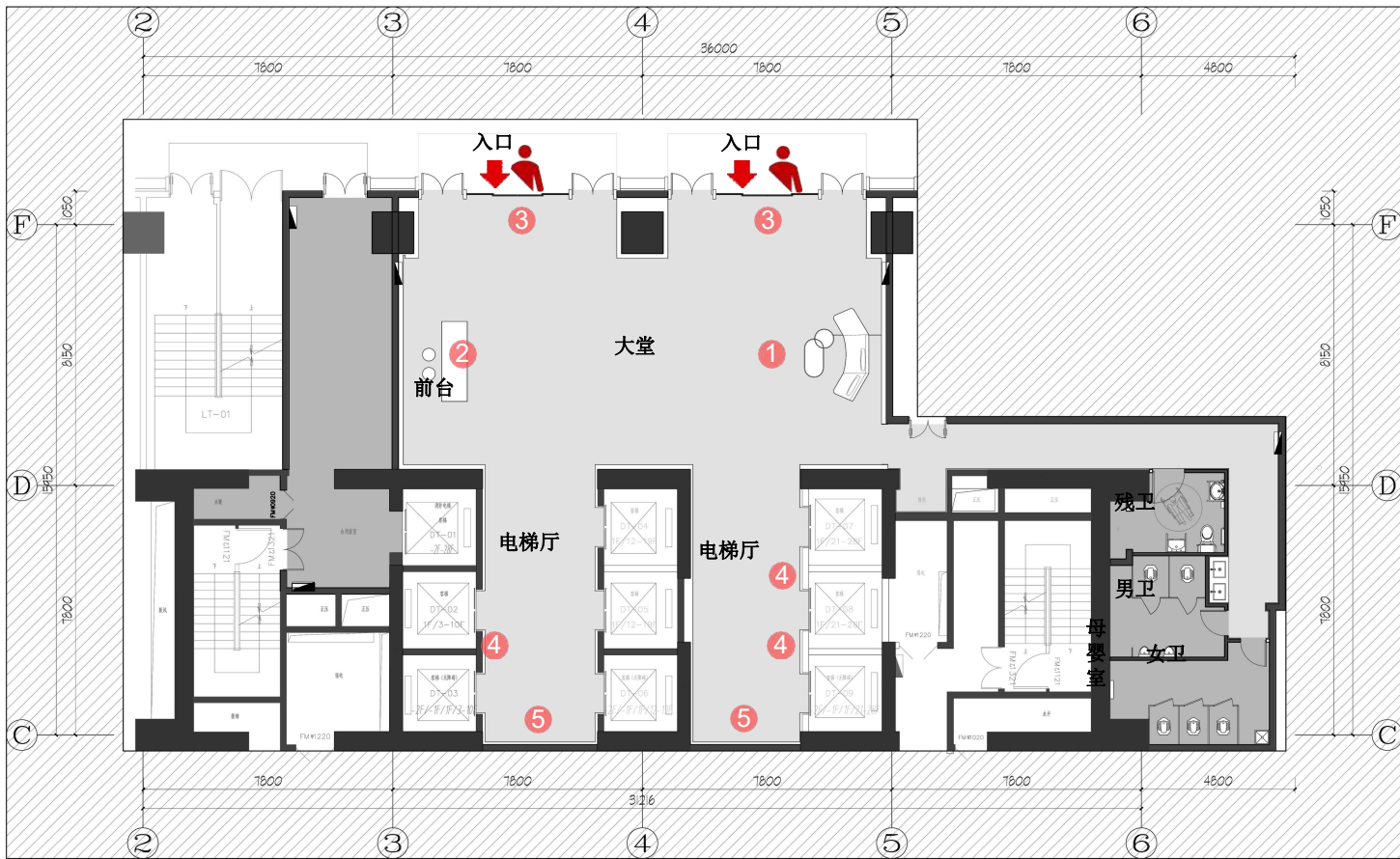
建筑外观旋律



室内幕墙造型

03

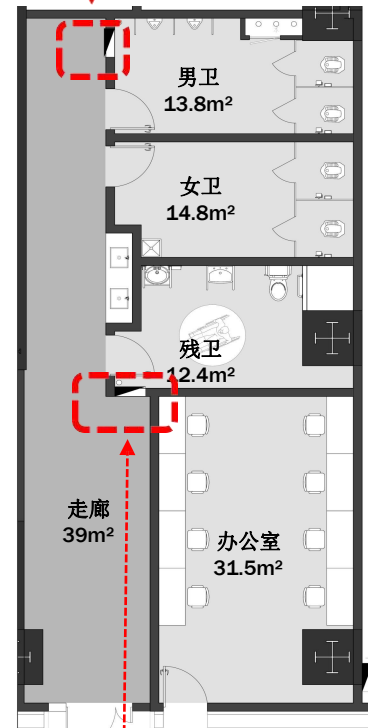
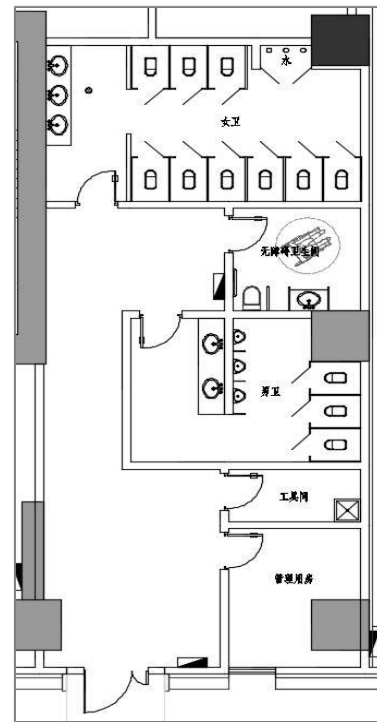
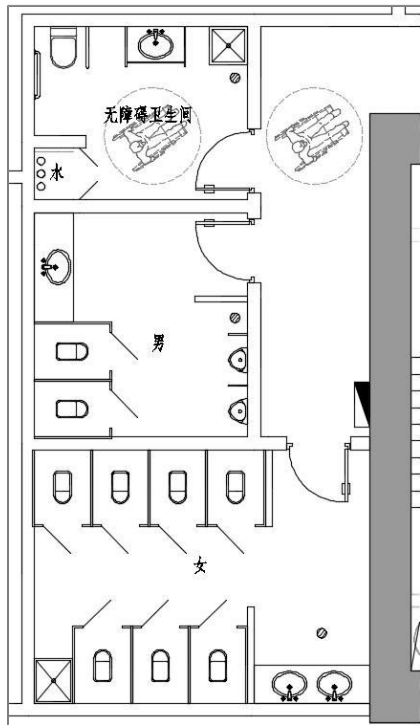
平面分析
Spatial intention



- ① 沙发区
- ② 接待前台
- ③ 电子感应门
- ④ 电梯前室广告屏
- ⑤ 艺术画\雕塑

一层平面布置图 (A栋)

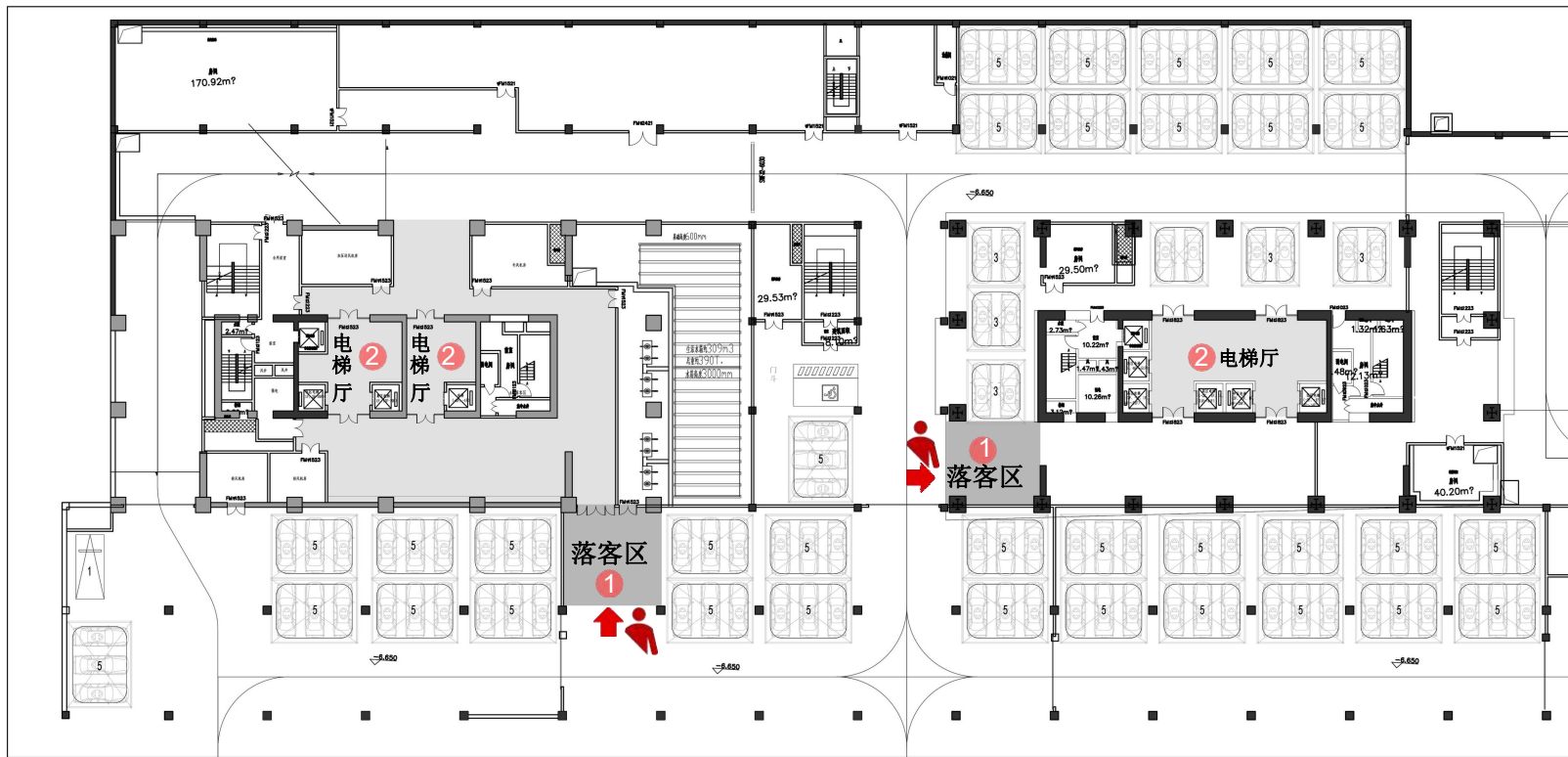
消防箱移位



消防箱移位



注：消防箱与管道井结合，完全嵌入墙体内部；

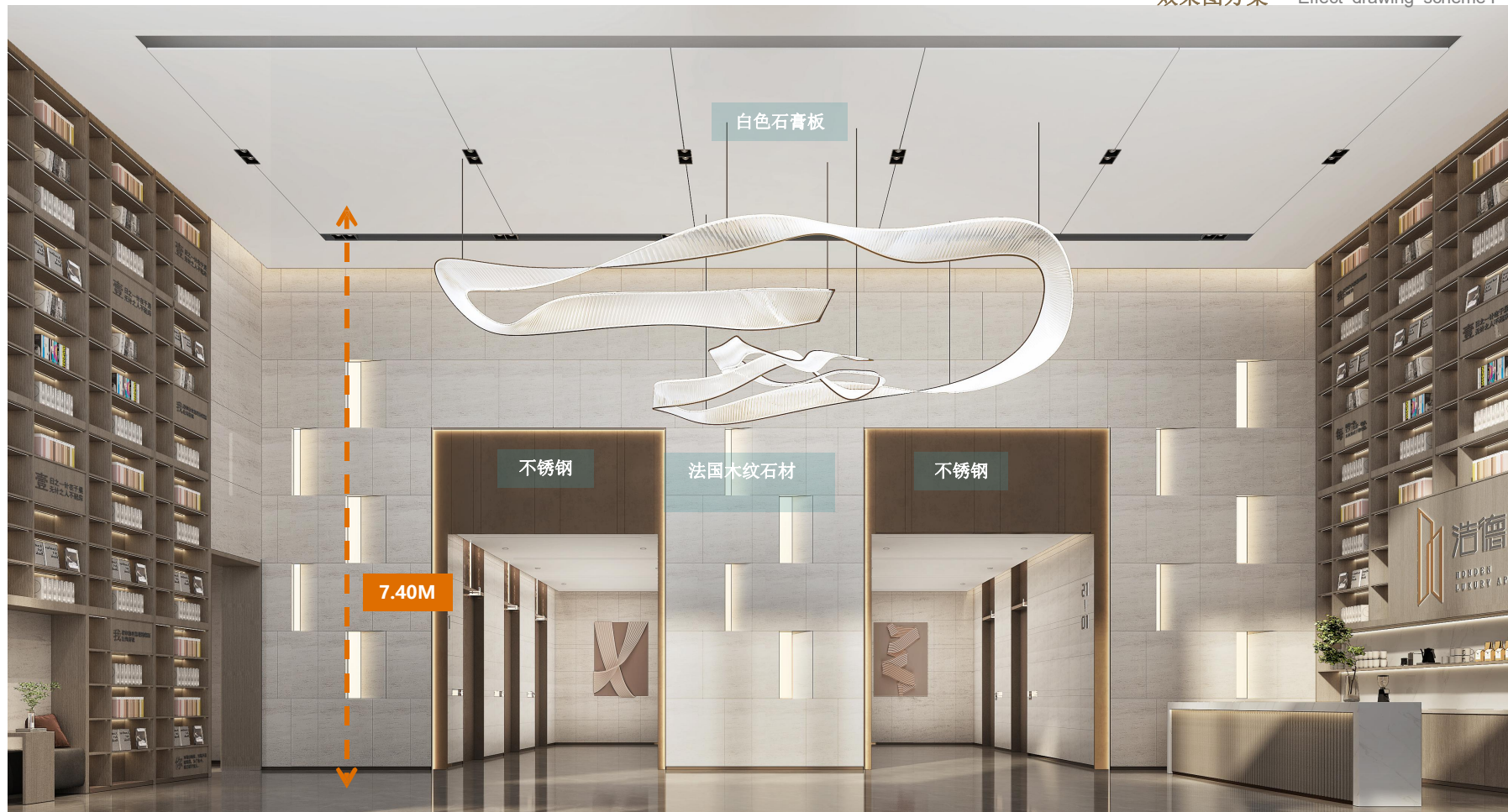




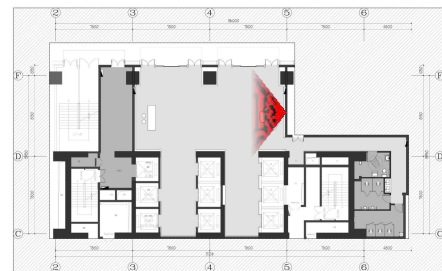
效果图展示

方 案 一

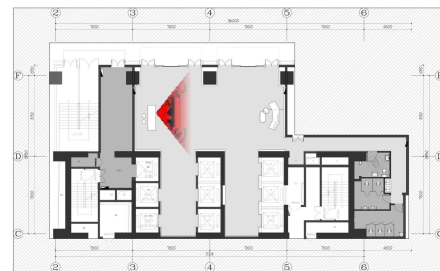




效果图方案一 Effect drawing scheme I



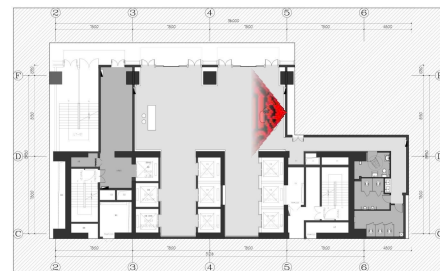
效果图方案一 Effect drawing scheme I

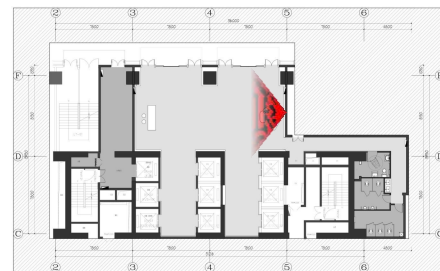


方 案 二



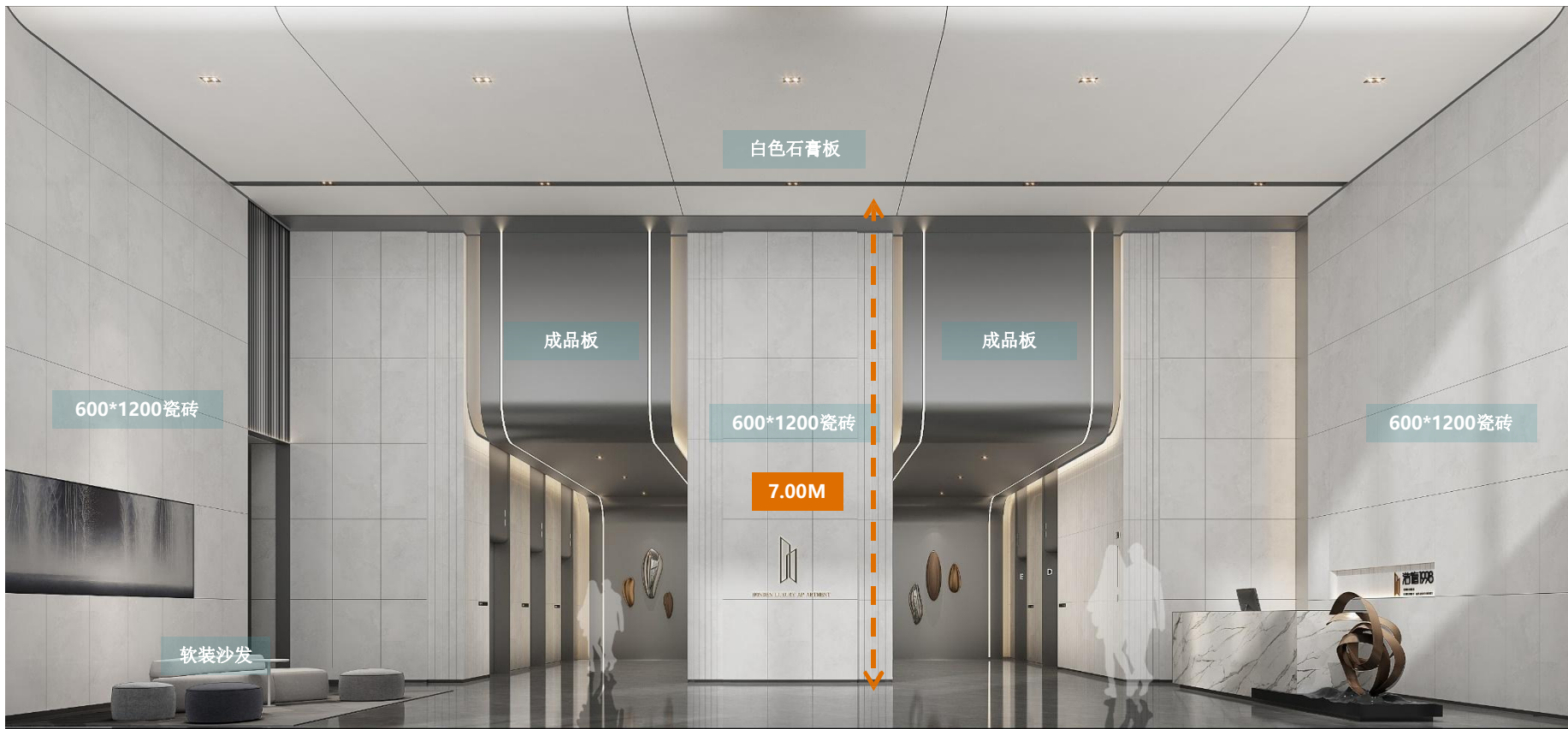


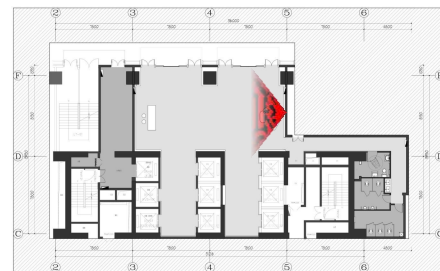


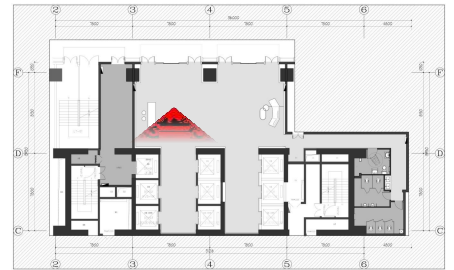


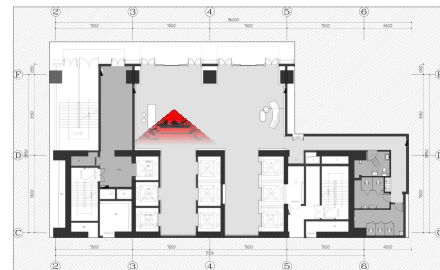
方 案 三



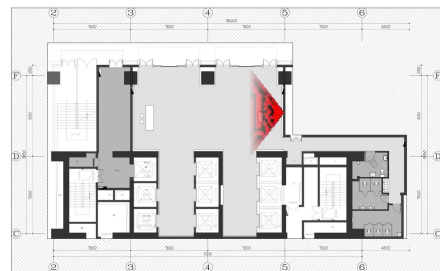


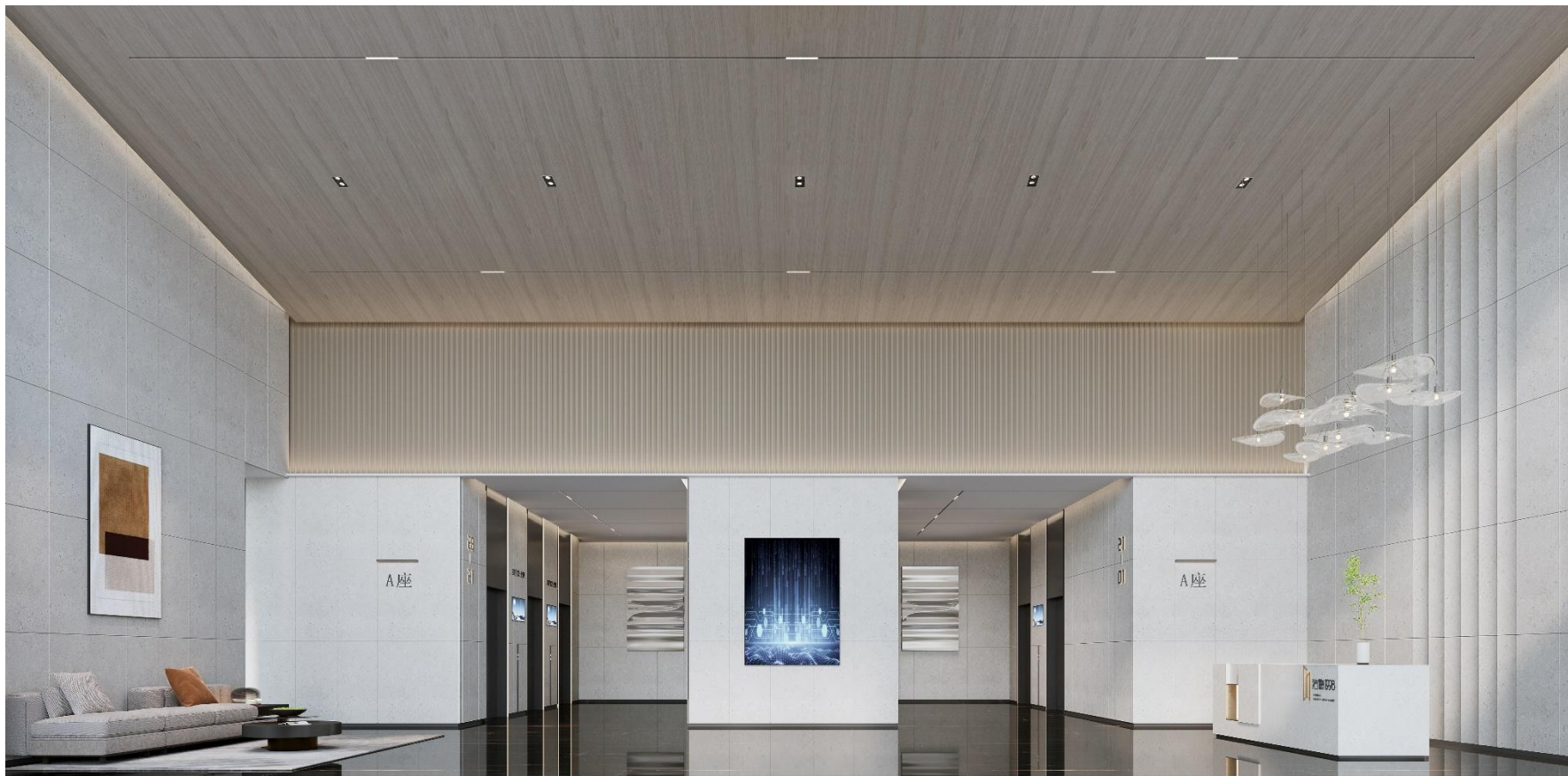




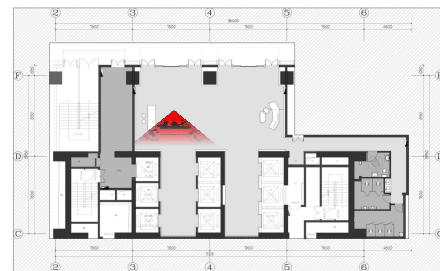
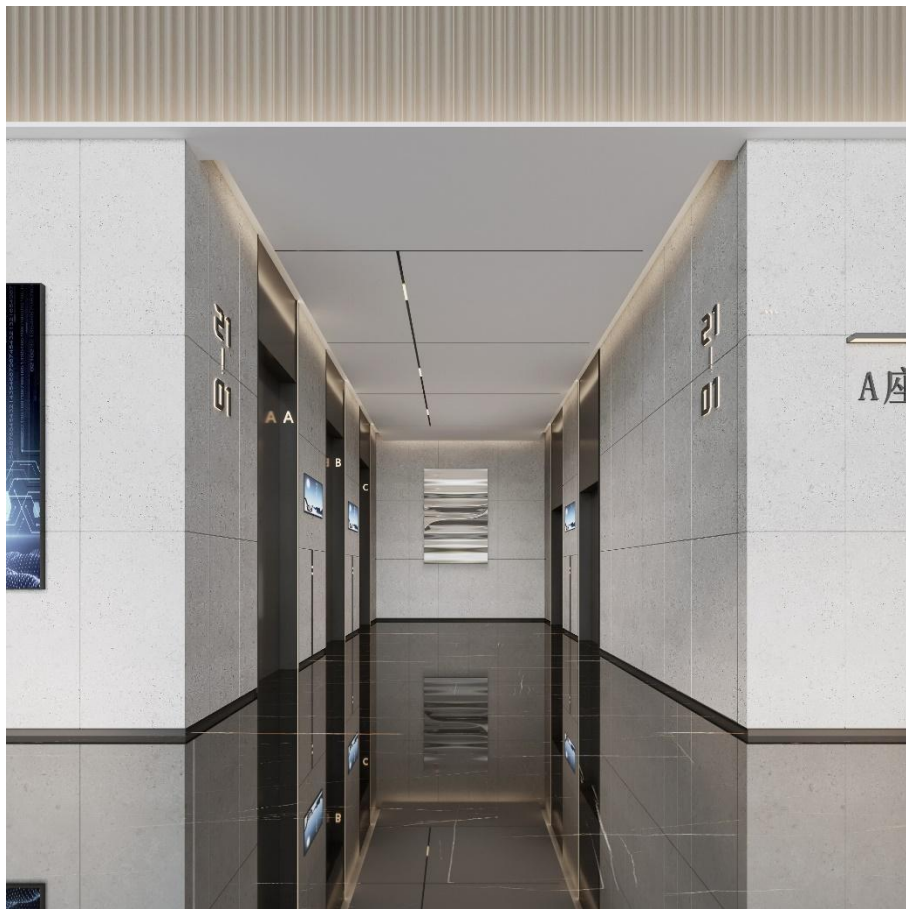


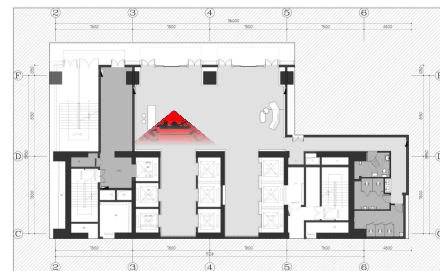
方 案 四







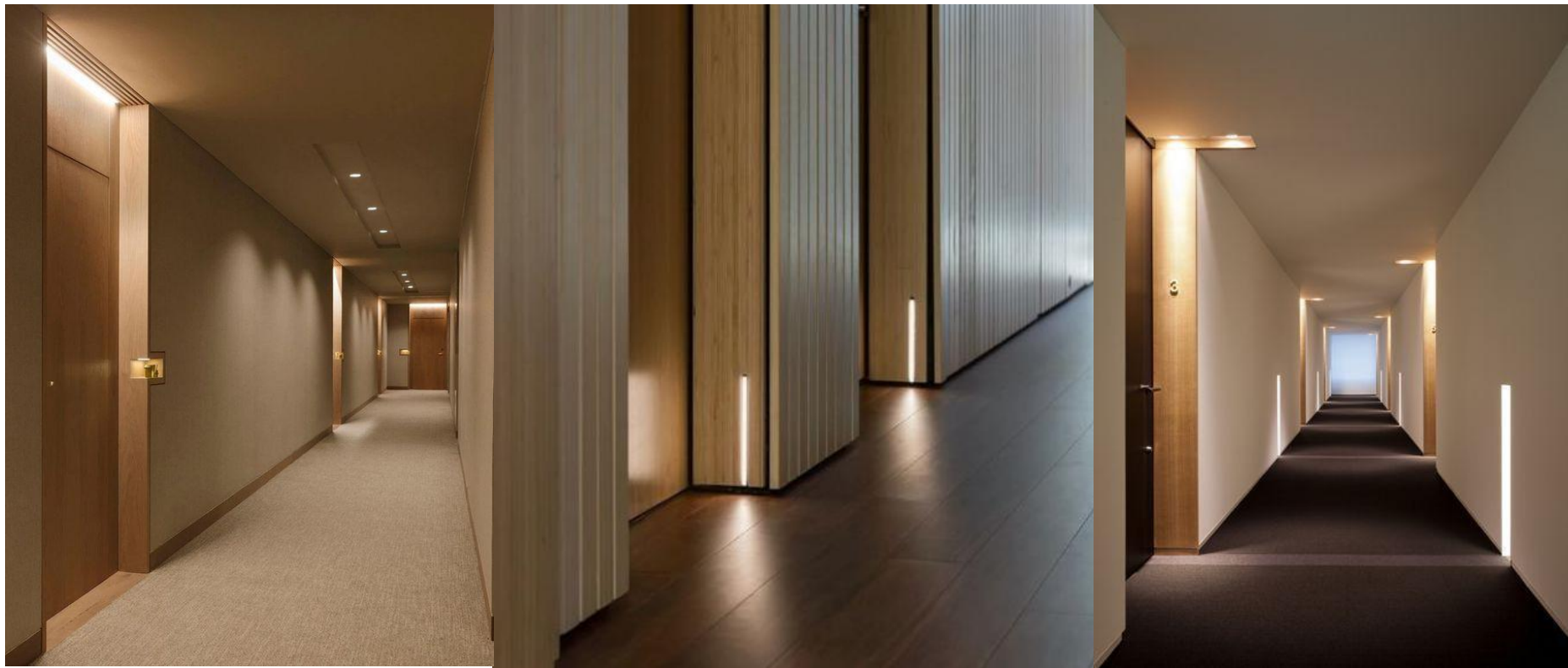


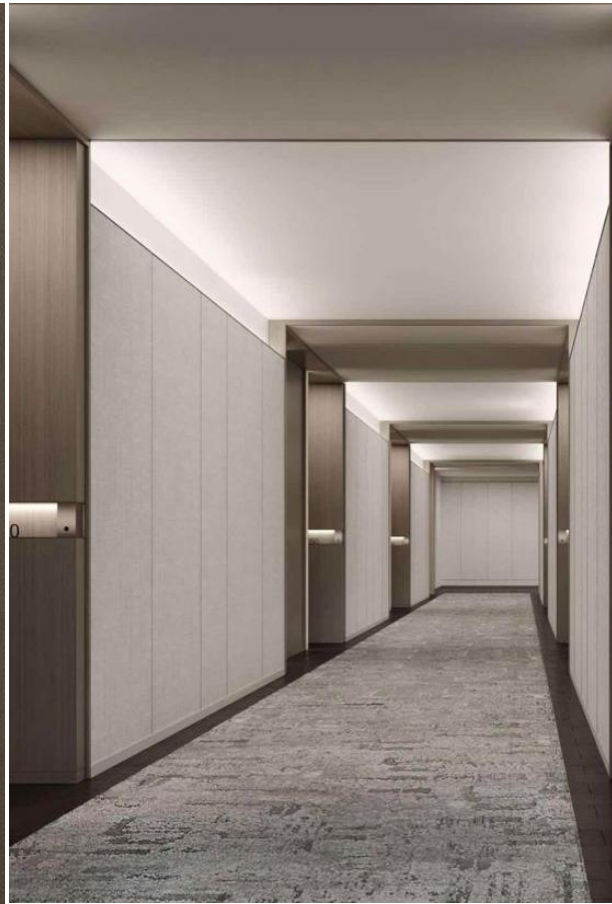


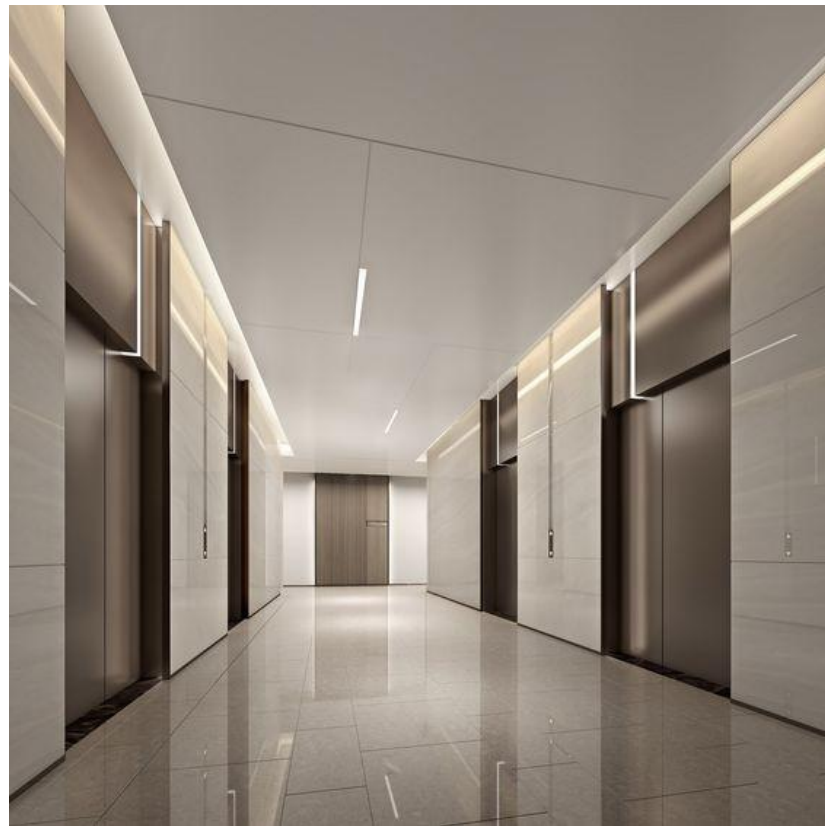
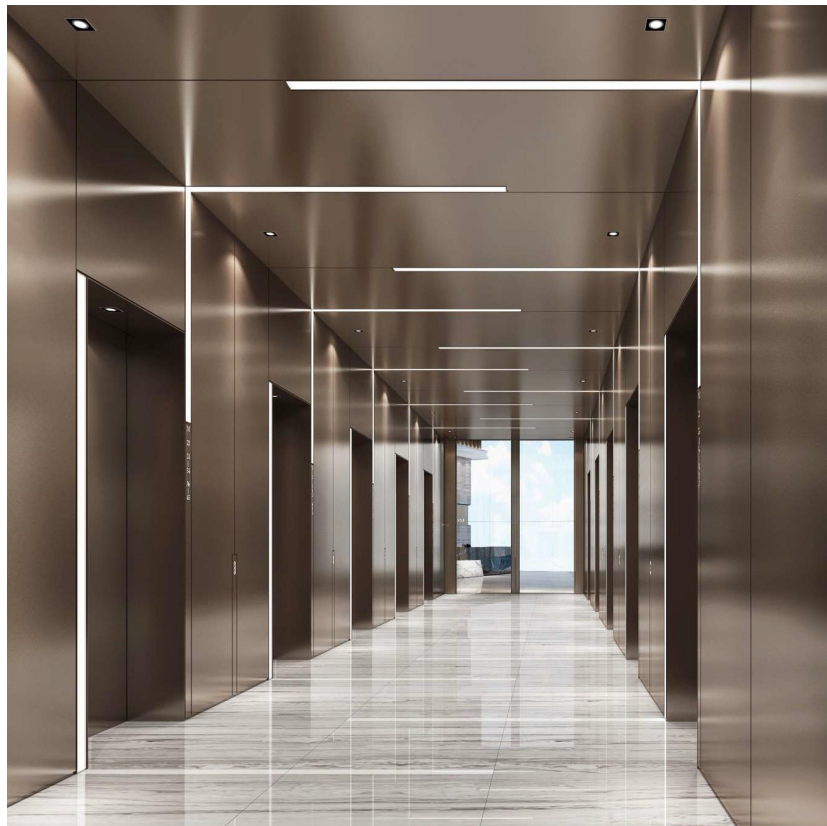
标准层走廊

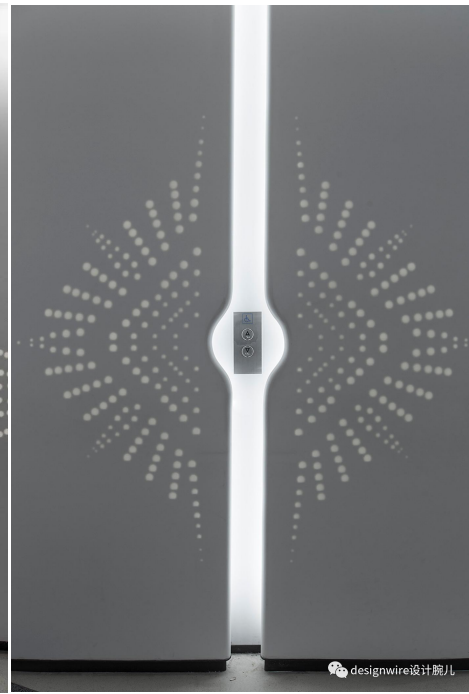
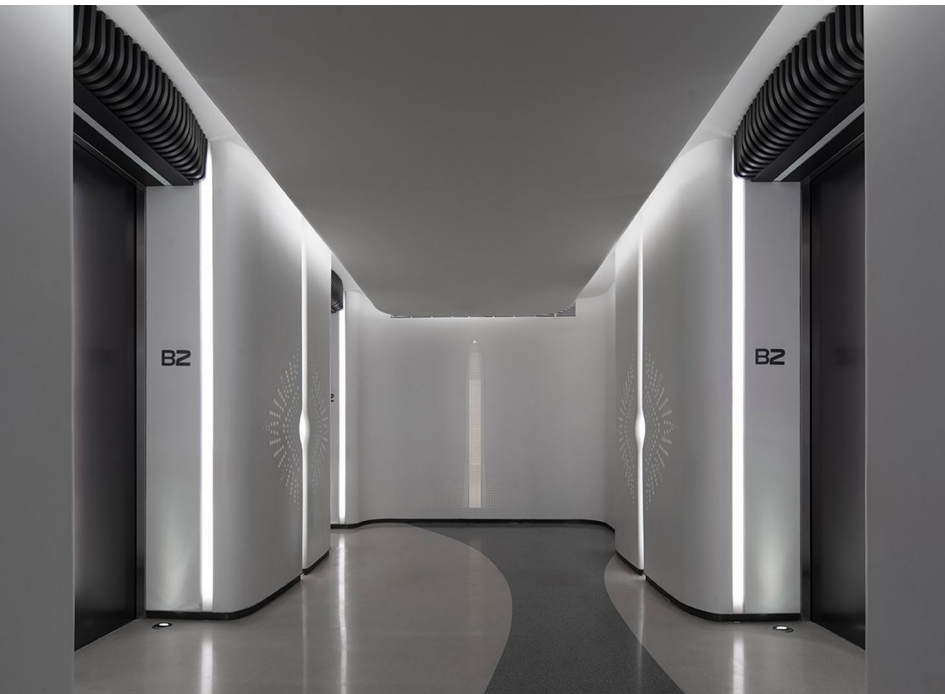












L.S.D

THANKS
