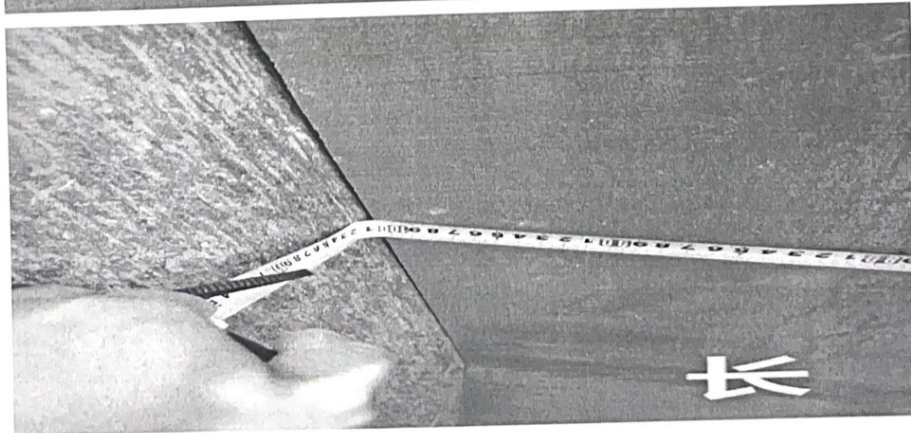
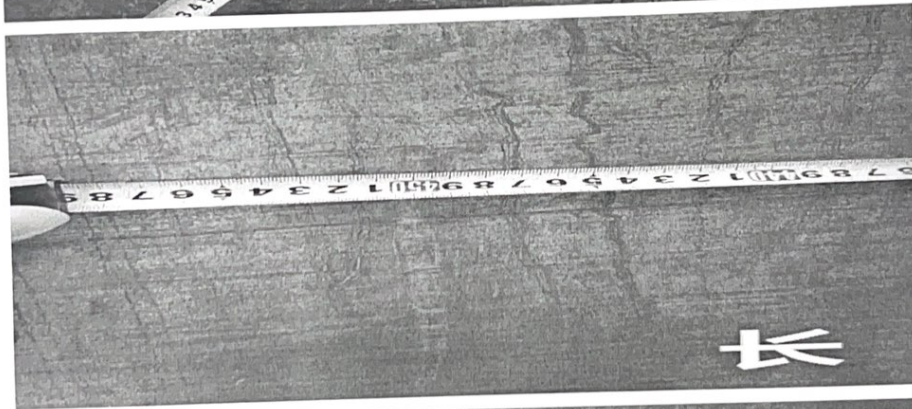
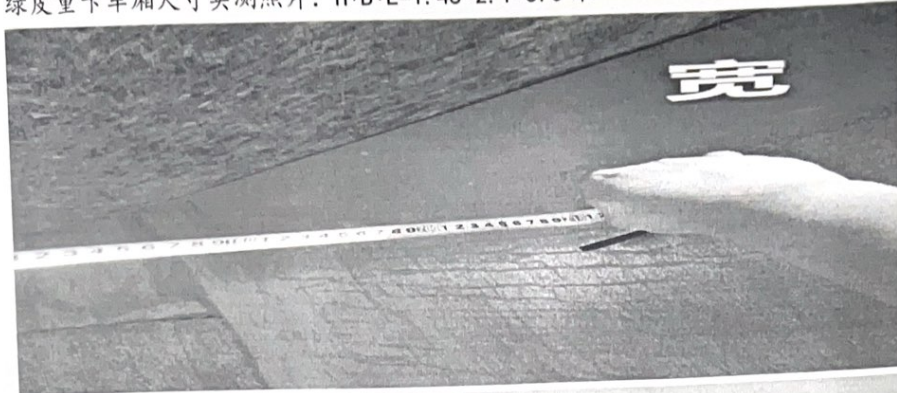


绿皮重卡车厢尺寸实测照片：H*B*L=1.45*2.1*5.5米



陈冬平

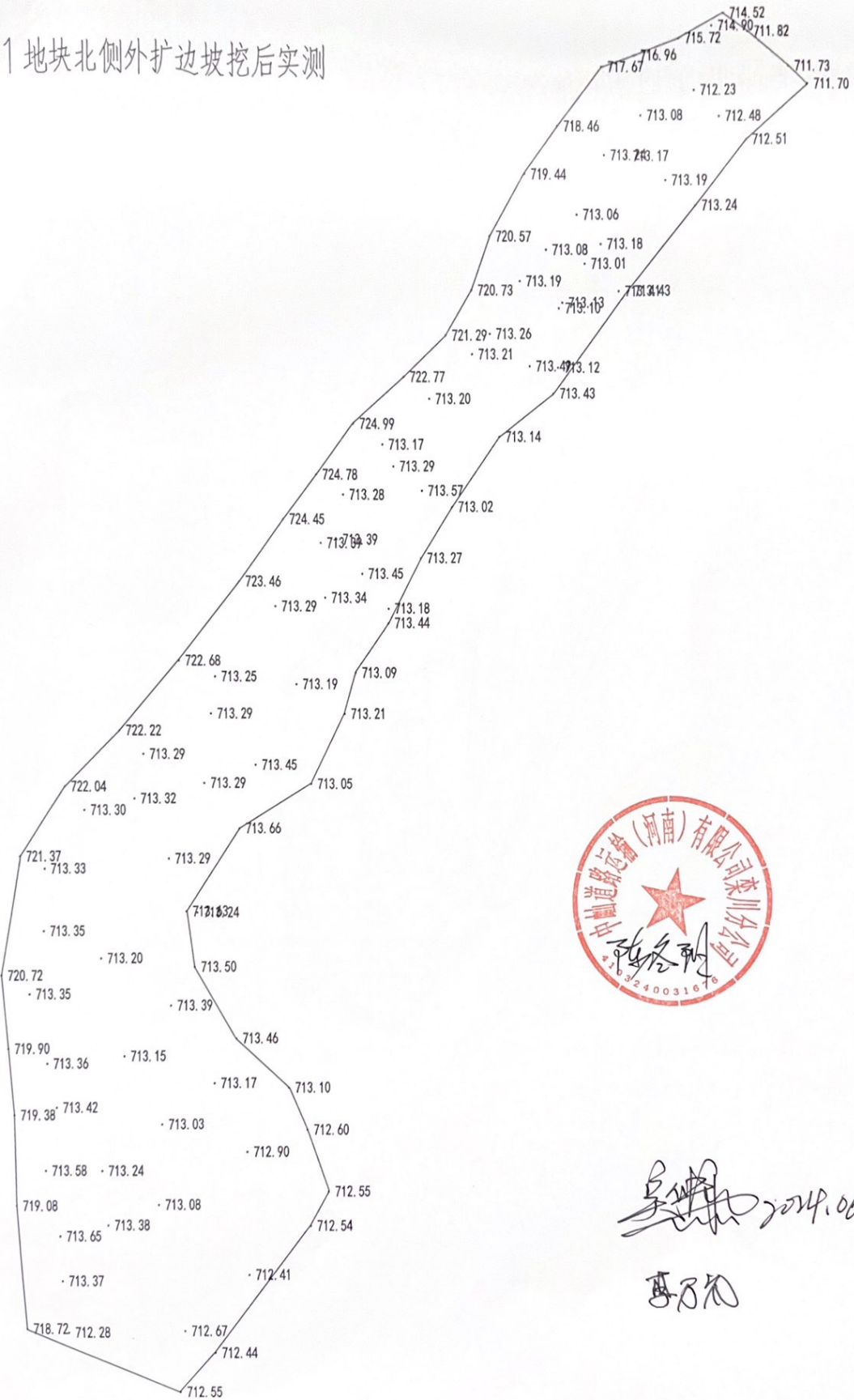
S1 地块北侧外扩边坡挖前实测

712.85, 710.89
 710.81
 714.93, 98, 711.42
 715.24
 716.94, 97, 714.53, 711.74
 717.52, 716.12
 717.73, 715.12
 718.27, 717.39, 715.85, 714.75
 718.51, 715.50, 714.87, 712.17
 718.62, 713.99
 719.08, 715.45, 714.32, 89
 719.40
 719.07
 720.39, 715.47, 715.23
 721.80, 720.00, 715.70, 713.36
 721.84, 720.13
 722.31
 722.78, 720.79, 715.39, 713.50
 723.35, 720.86, 87, 714.72, 55
 723.98, 721.54, 721.05, 715.32, 714.44, 46
 724.28, 721.60, 721.15, 715.23, 714.67
 724.43
 725.17, 721.55, 713.16
 725.32, 713.27, 713.28, 25
 724.60, 712.86
 725.34, 724.13, 712.20, 712.86
 724.74, 712.77, 713.20
 725.30, 724.74, 719.51, 719.31
 725.05, 724.87, 719.46, 719.43, 08
 719.41, 719.20
 719.36
 724.27, 724.24, 724.20, 719.19, 94
 719.55
 723.70, 723.48, 719.26, 69
 723.23, 723.31, 719.44, 713.26
 722.89, 722.88, 722.88, 719.53, 713.26
 722.89, 719.78
 722.42, 722.83, 719.61, 713.19
 722.62, 719.42
 722.48, 722.48, 719.42
 722.80, 722.31, 719.28, 717.43, 713.58, 52
 722.37, 720.62, 719.35, 717.58, 2
 722.80, 720.29, 719.54, 717.80
 722.64, 720.51, 11, 719.42, 715.44, 24
 720.78, 720.04, 719.29, 718.85, 714.32
 722.40, 720.87, 718.93, 715.19
 720.39, 719.34, 713.93
 721.96, 720.84, 718.65, 714.56, 713.79
 721.47, 720.04, 719.32, 718.83, 713.93, 94
 720.58, 719.46, 717.93, 712.94
 720.96, 719.62, 719.01, 718.97, 717.46, 717.44
 719.84, 719.01, 718.61, 719.01, 717.37
 719.21, 718.72, 717.93, 717.26, 712.09, 5
 719.99, 39, 718.77, 56, 717.71, 712.52
 718.95, 718.95, 717.12, 46, 712.35
 719.26, 718.66, 718.18, 717.68, 712.29
 718.24, 718.97, 718.06, 712.29, 712.29
 717.85
 719.19, 712.36, 712.33
 719.66, 718.12, 712.74
 718.75, 718.07, 717.07, 718.34, 715.55, 712.38
 718.47, 718.00, 716.04, 715.53
 718.67, 94, 81, 64, 36
 718.52, 716.12, 712.49
 718.99, 712.37
 718.99, 712.41
 718.85



[Handwritten signature]
 [Handwritten initials]

S1 地块北侧外扩边坡挖后实测



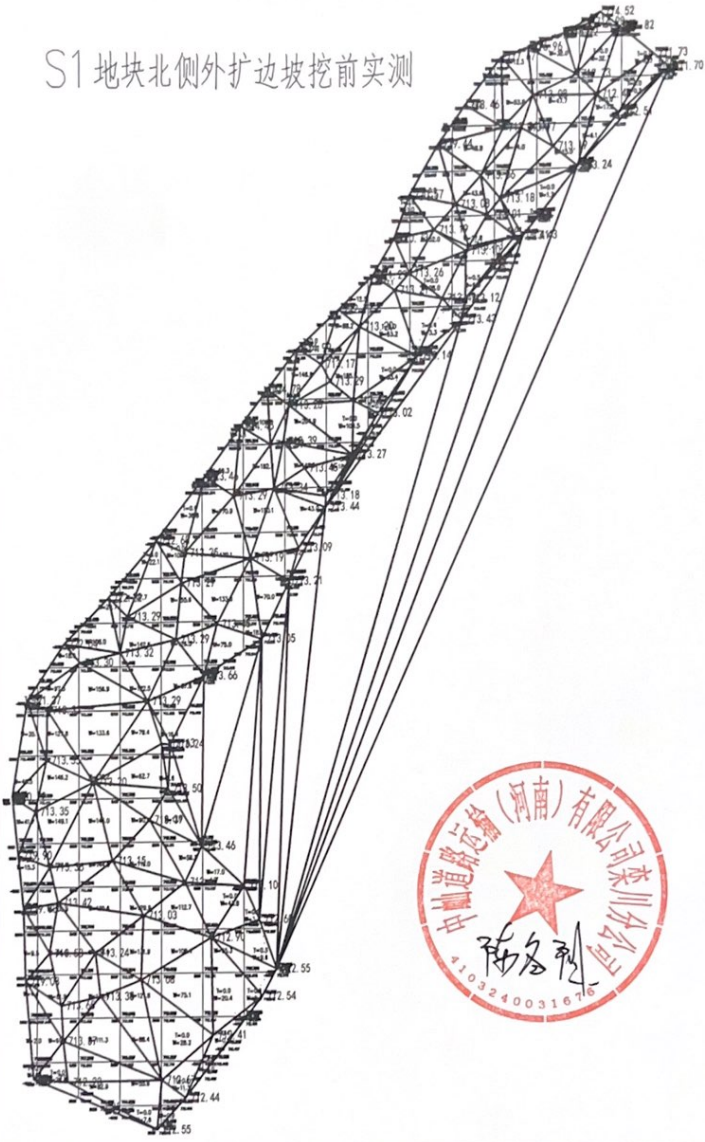
2014.06.18

李万光

挖方

14.5
88.8
136.7
121.4
87.6
97.6
94.1
171.8
404.2
426.6
407.0
404.4
402.4
488.8
489.3
441.5
392.3
390.1
445.0
475.0
544.0
556.3
432.4
299.6
176.6
10.3

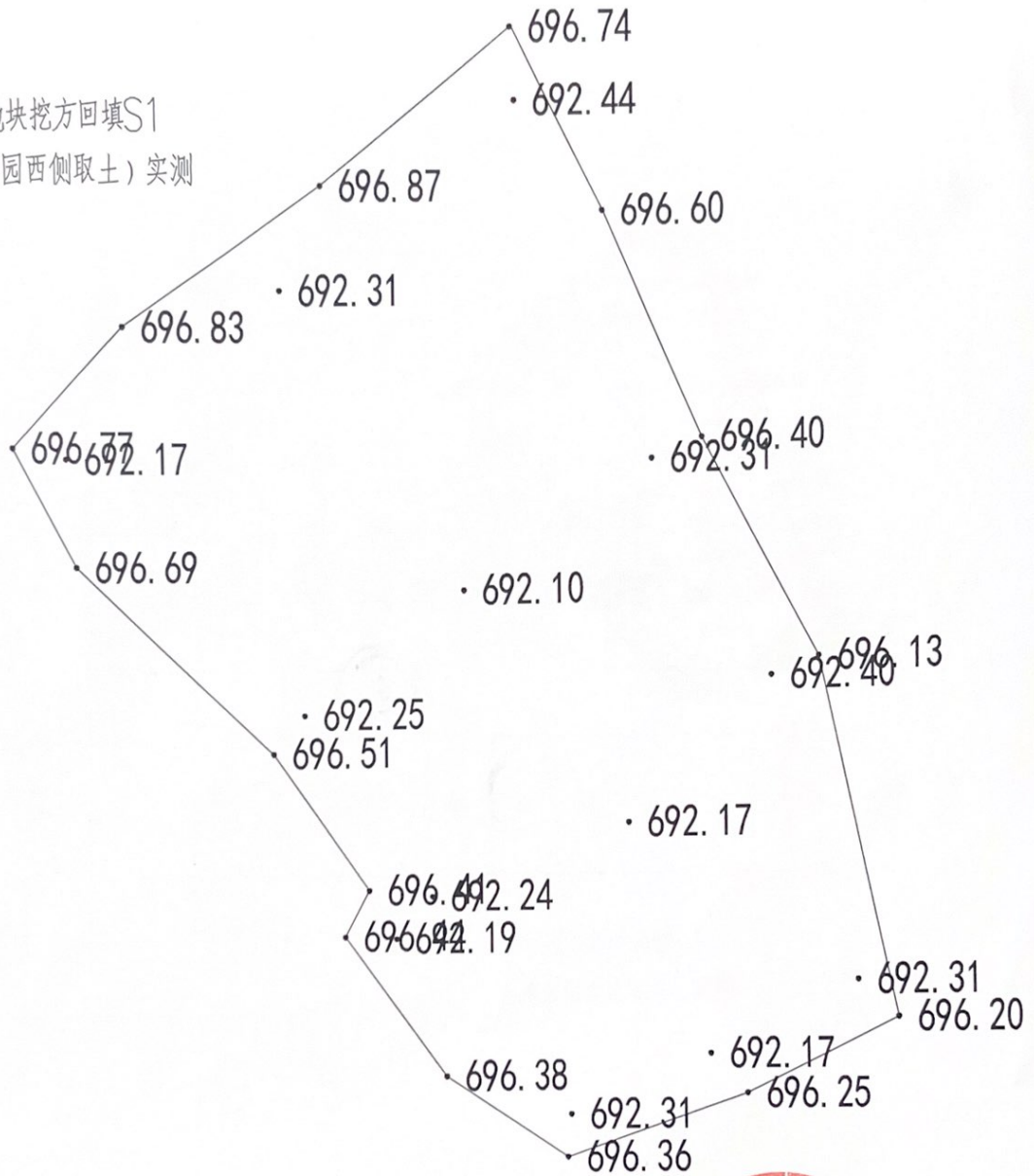
S1地块北侧外扩边坡挖前实测



总面积	2411.1	0.0	0.0	0.0	0.0	0.1	0.5	1.0	0.0	0.0	0.0	0.4	1.0	0.1	0.0	0.0	0.0	0.0	填方
总填方	3.3																		
总挖方	7998.2																		
平均高度																			

陈名利 2014.06.19
陈名利

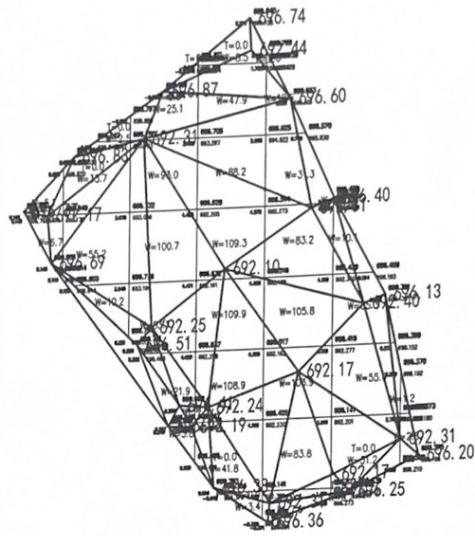
S7地块挖方回填S1
(桑葚园西侧取土) 实测



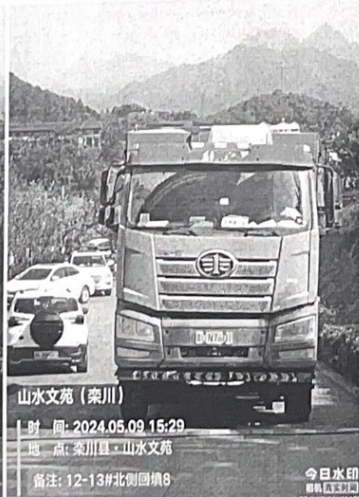
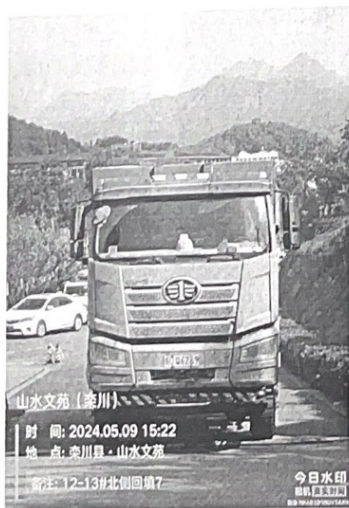
Handwritten signature and initials.

挖方

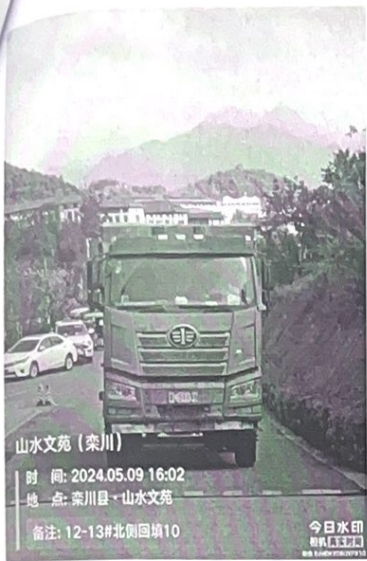
0.0
9.1
88.1
253.3
365.2
314.3
291.5
163.3
11.1



13#楼北侧车库顶板回填计量



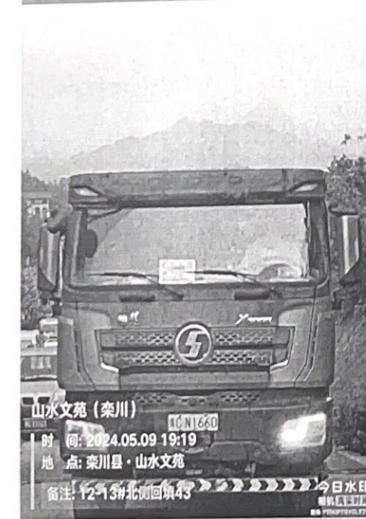
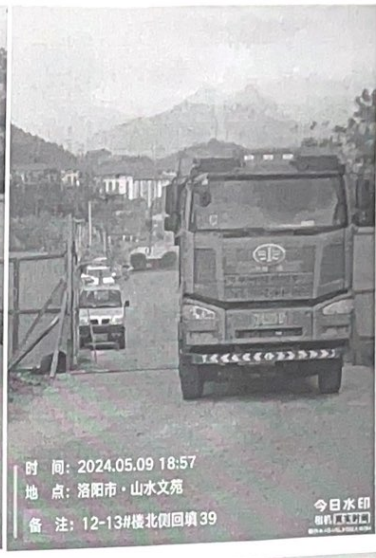
吴林
2024.5.10 陈冬科



吴中
2024.5.10 陈冬林



吴林
陈石光
2024.10.10 陈石光



吴林
陈名烈
2024.5.10.



山水文苑 (栾川)
时间: 2024.05.09 19:27
地点: 栾川县·山水文苑
备注: 12-13#北侧回填46

今日水印
相机 [] [] [] []
88 8888888888888888



山水文苑 (栾川)
时间: 2024.05.09 19:28
地点: 栾川县·山水文苑
备注: 12-13#北侧回填47

今日水印
相机 [] [] [] []
88 8888888888888888



山水文苑 (栾川)
时间: 2024.05.09 19:31
地点: 栾川县·山水文苑
备注: 12-13#北侧回填48

今日水印
相机 [] [] [] []
88 8888888888888888



山水文苑 (栾川)
时间: 2024.05.09 19:35
地点: 栾川县·山水文苑
备注: 12-13#北侧回填49

今日水印
相机 [] [] [] []
88 8888888888888888



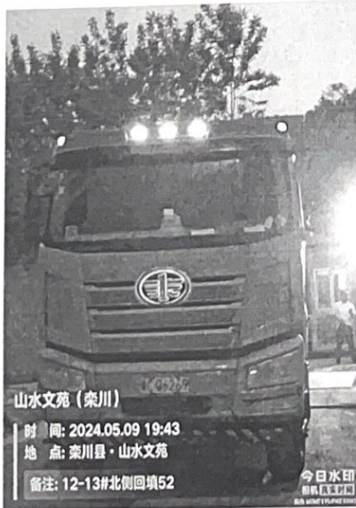
山水文苑 (栾川)
时间: 2024.05.09 19:37
地点: 栾川县·山水文苑
备注: 12-13#北侧回填50

今日水印
相机 [] [] [] []
88 8888888888888888



山水文苑 (栾川)
时间: 2024.05.09 19:42
地点: 栾川县·山水文苑
备注: 12-13#北侧回填51

今日水印
相机 [] [] [] []
88 8888888888888888



山水文苑 (栾川)
时间: 2024.05.09 19:43
地点: 栾川县·山水文苑
备注: 12-13#北侧回填52

今日水印
相机 [] [] [] []
88 8888888888888888



山水文苑 (栾川)
时间: 2024.05.09 19:45
地点: 栾川县·山水文苑
备注: 12-13#北侧回填53

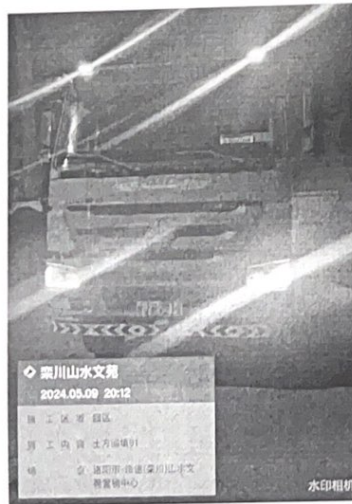
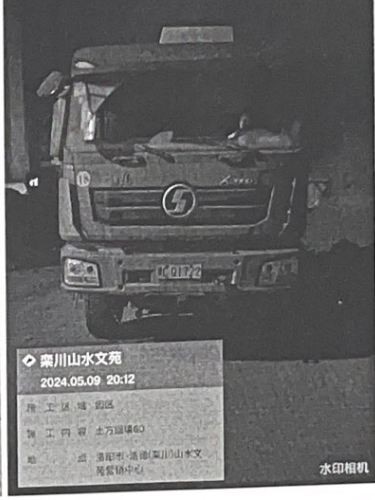
今日水印
相机 [] [] [] []
88 8888888888888888



山水文苑 (栾川)
时间: 2024.05.09 19:48
地点: 栾川县·山水文苑
备注: 12-13#北侧回填54

今日水印
相机 [] [] [] []
88 8888888888888888

2024.5.10. 陈为阳



[Handwritten signature]
 陈冬阳
 2024.5.10



绿皮 重型卡车, 总计 68 车。2024.5.09 日。

梁川山水文苑
2024.5.10.陈冬阳

12#楼北及西侧车库顶板回填计量



2024.5.12
 陈圣刚




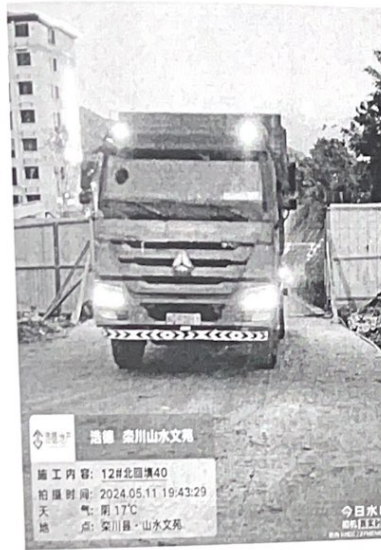
吴明
西乃礼
2024.5.12 陈强




2024.5.12
陈冬刚




 2024.5.12 陈各列



绿皮 重型卡车, 12#楼北及西侧回填总计 45 车。2024.5.11 日


 西乃礼
 2024.5.12 陈名明