



# 洛阳开元空中别墅

设计方案

Luo Yang kai  
yuan air villa

Design Scheme

2022.10

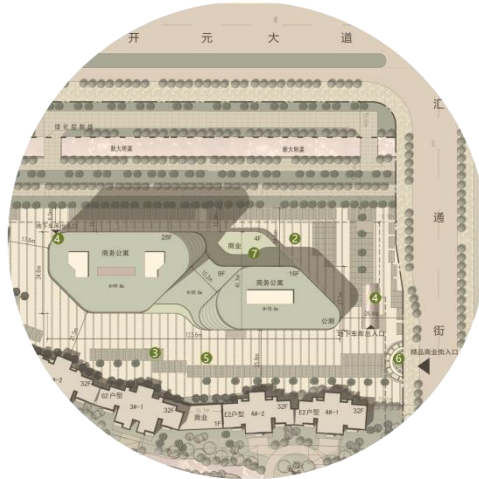


## 目录/CONTENTS

- 1 概述      Overviews
- 2 设计思路      Design ideas
- 3 平面布置      Plane Arrangement
- 4 空间效果展示      Space effect display



域



廓



形



行云流水

项目基地位于开元大道与汇通街交叉口，主要车流从 东侧进入场地； 用地周边以居住小区为主； 配套有学校、商业广场等， 居民生活便利； 用地东南侧临近洛水， 水资源丰富

The project base is located at the intersection of Kaiyuan Avenue and Huitong Street. The main traffic flow enters the site from the East side. The surrounding areas of land are mainly residential districts, with schools, commercial plazas and other facilities for residents to live in. The southeast side of the land is close to Luoshui, which is rich in water resources.



佛教发源



千年帝都



国色牡丹

斯“千年帝都，牡丹花城”“八关都邑”、“山河拱戴，形势甲于天下”之称；而且雄踞“天下之中”，“东压江淮，西挟关陇，北通幽燕，南系荆襄”，人称“八方辐辏”、“九州腹地”、“十省通衢”。

洛阳立河洛之间，居天下之中，既禀中原大地敦厚磅礴之气，也具南国水乡妩媚风流之质。洛阳有着 5000 多年文明史、4000 年的建城史和 1500 多年的建都史，先后有 105 位帝王在此定鼎九州。基地位于洛阳市洛龙区，周围自然、人文资源丰富，白马寺、龙门石窟、国花园等闻名遐迩，风景优美。

唯有牡丹真国色 花开时节动京城 —白居易

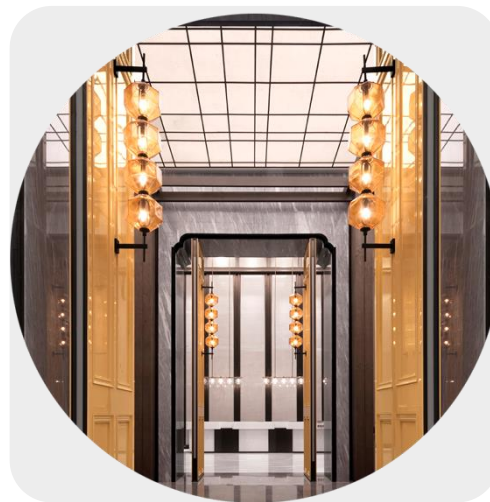
设计语言/Design language



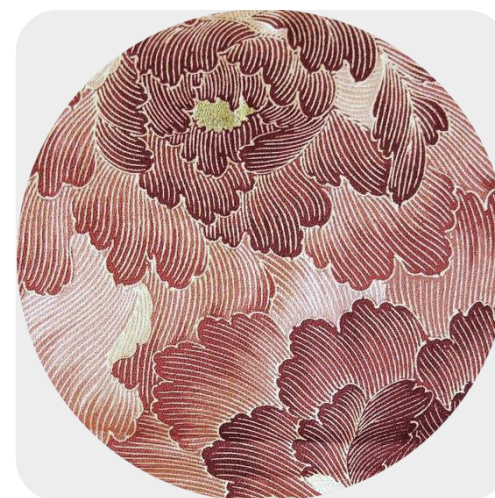
洛河  
清透



文脉  
锦绣画卷



新式  
儒雅



唯美  
牡丹

# Public Areas



Strong and characterful interiors

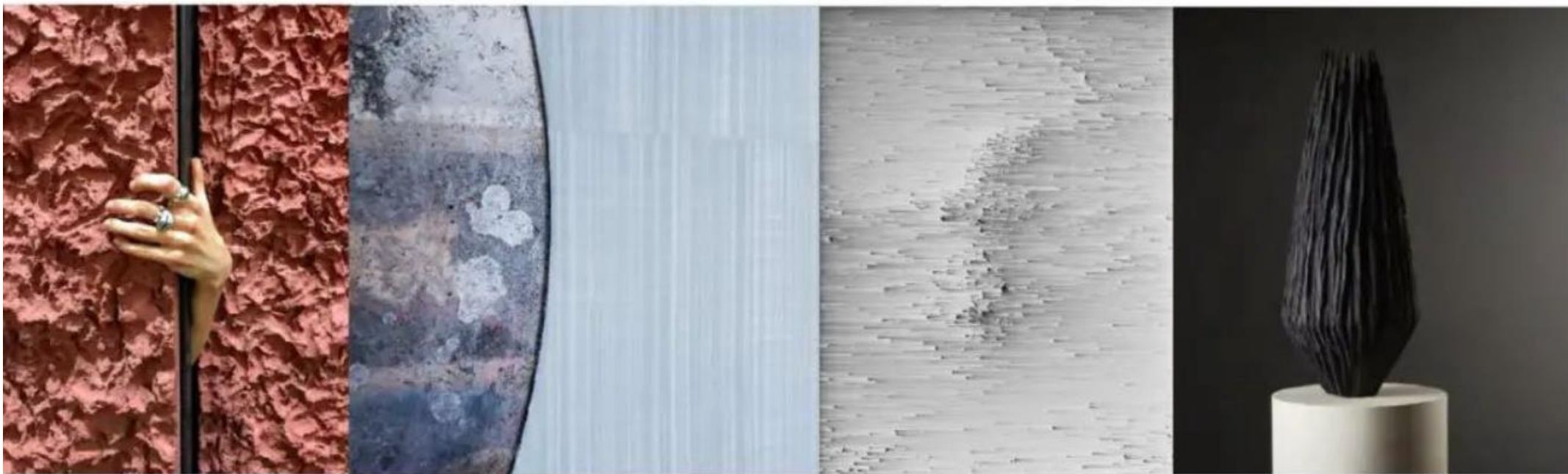
强烈有特征的室内空间

# Courtyards



A series of connecting courtyards respecting the principles of traditional Chinese architecture

一系列的几进庭院是从尊重传统中式庭院而来



Texture

质感

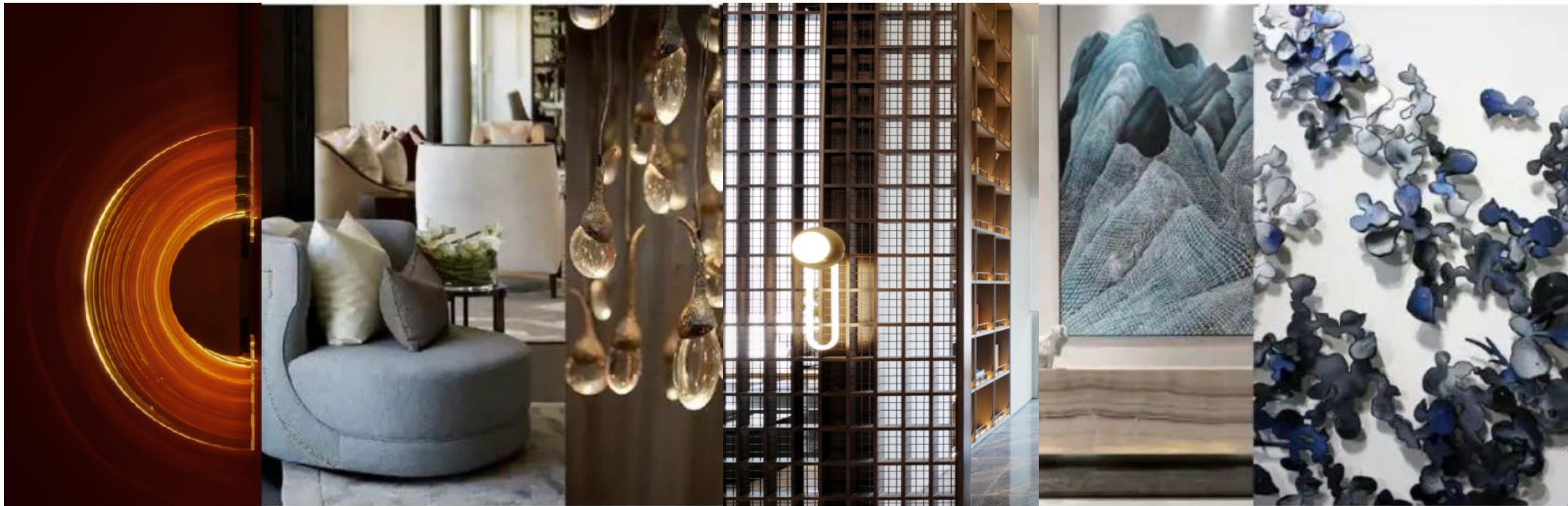
# Public Areas



Surprising views into the landscape

景观带来的惊喜

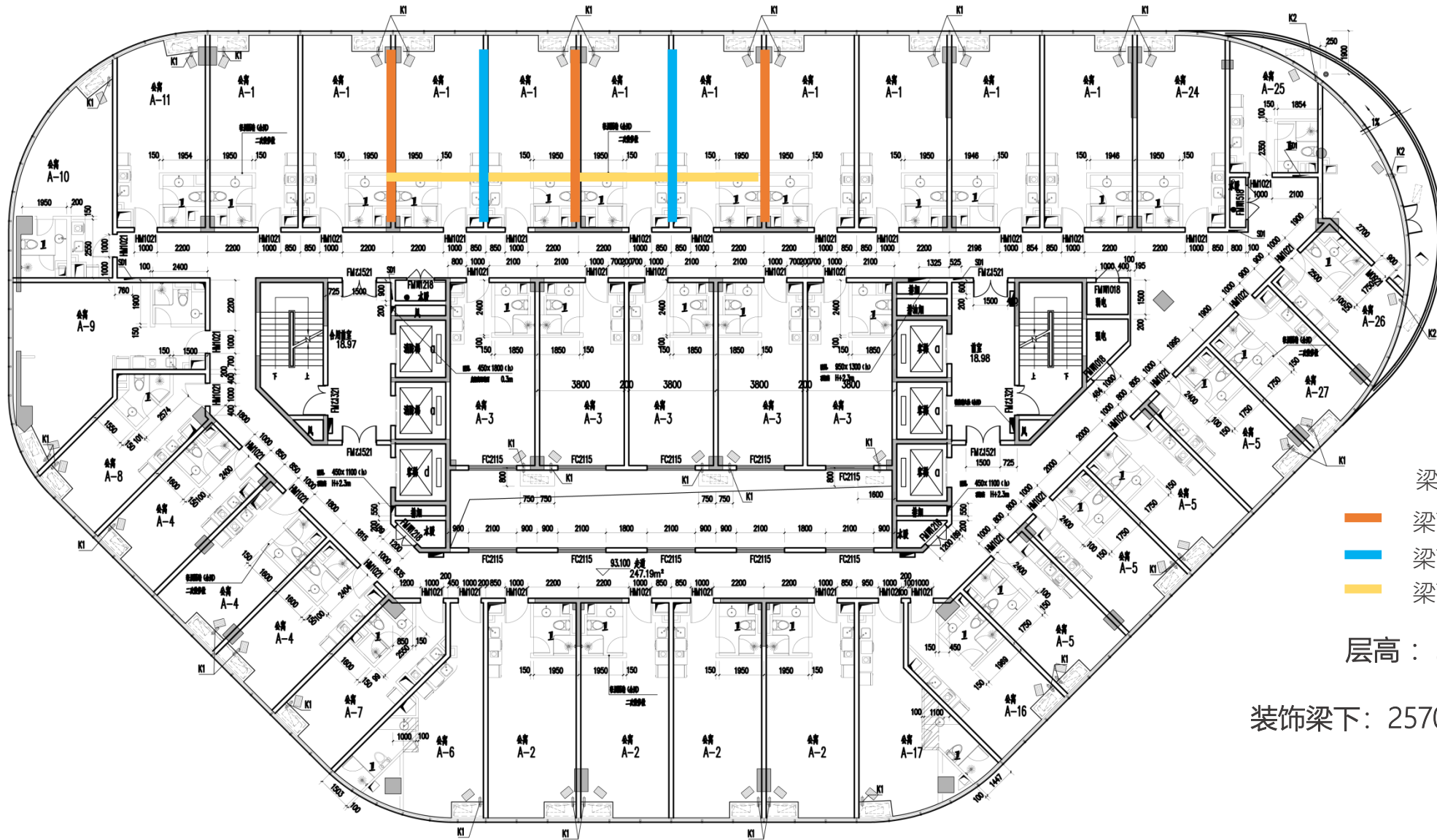
# Design Direction



Classic design elements filtered through  
a contemporary lens

通过现代的镜头审视传统的设计元素

27层原始平面布置图/ Original floor plan on level 27

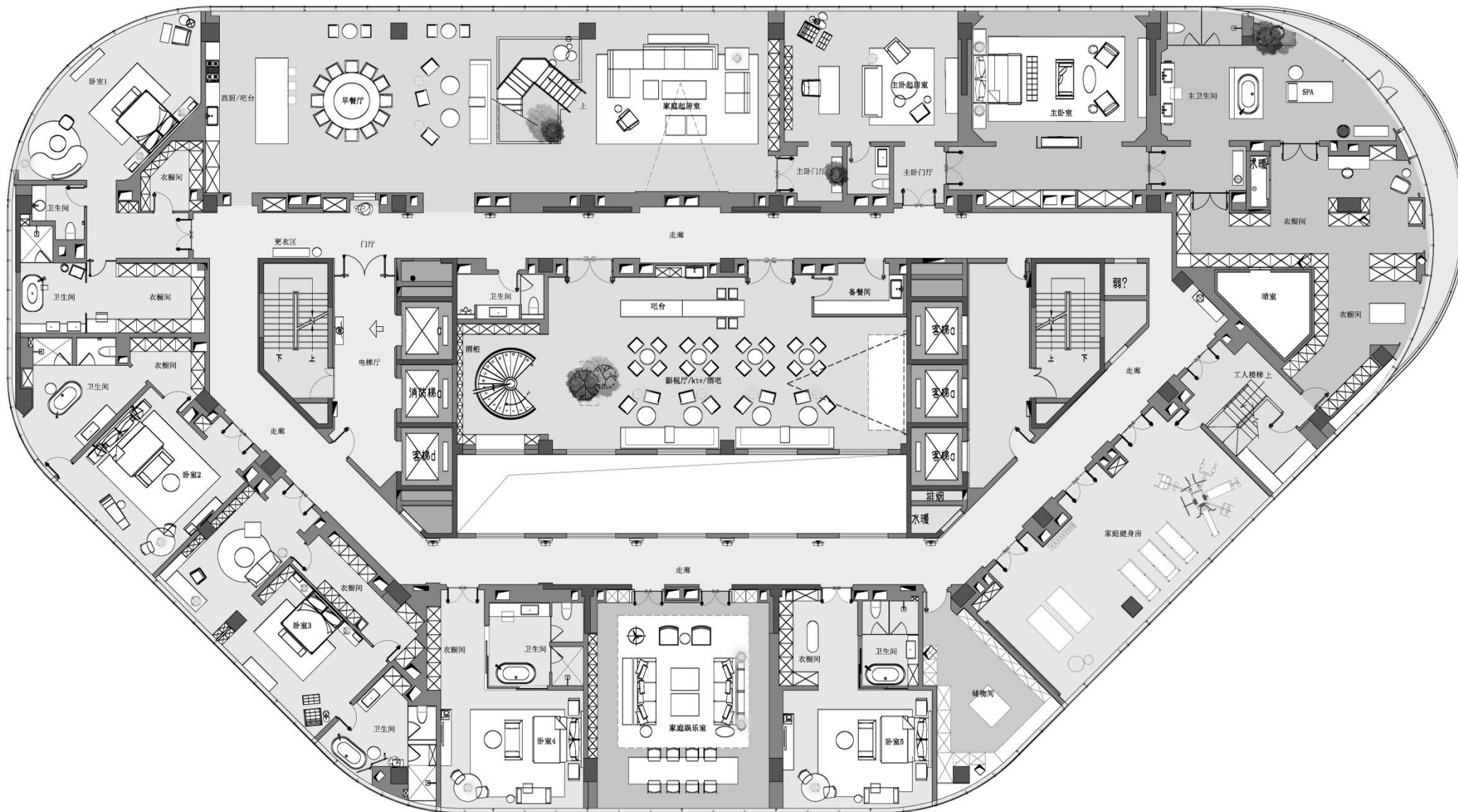


梁位分析

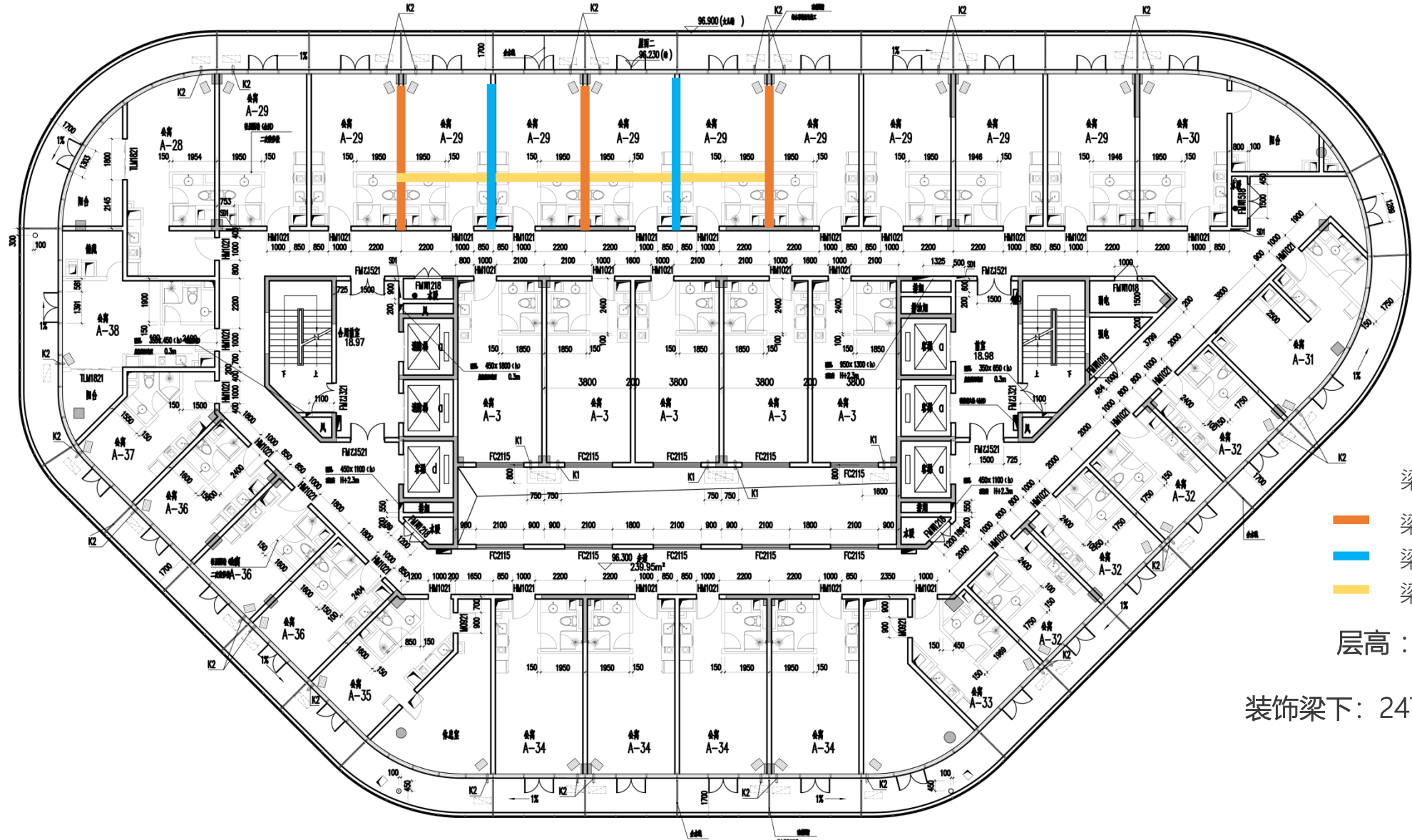
- 梁高630mm
- 梁高530mm
- 梁高500mm

层高：3200mm

装饰梁下：2570mm 2670mm



28层原始平面布置图/ LOBBY PLAN

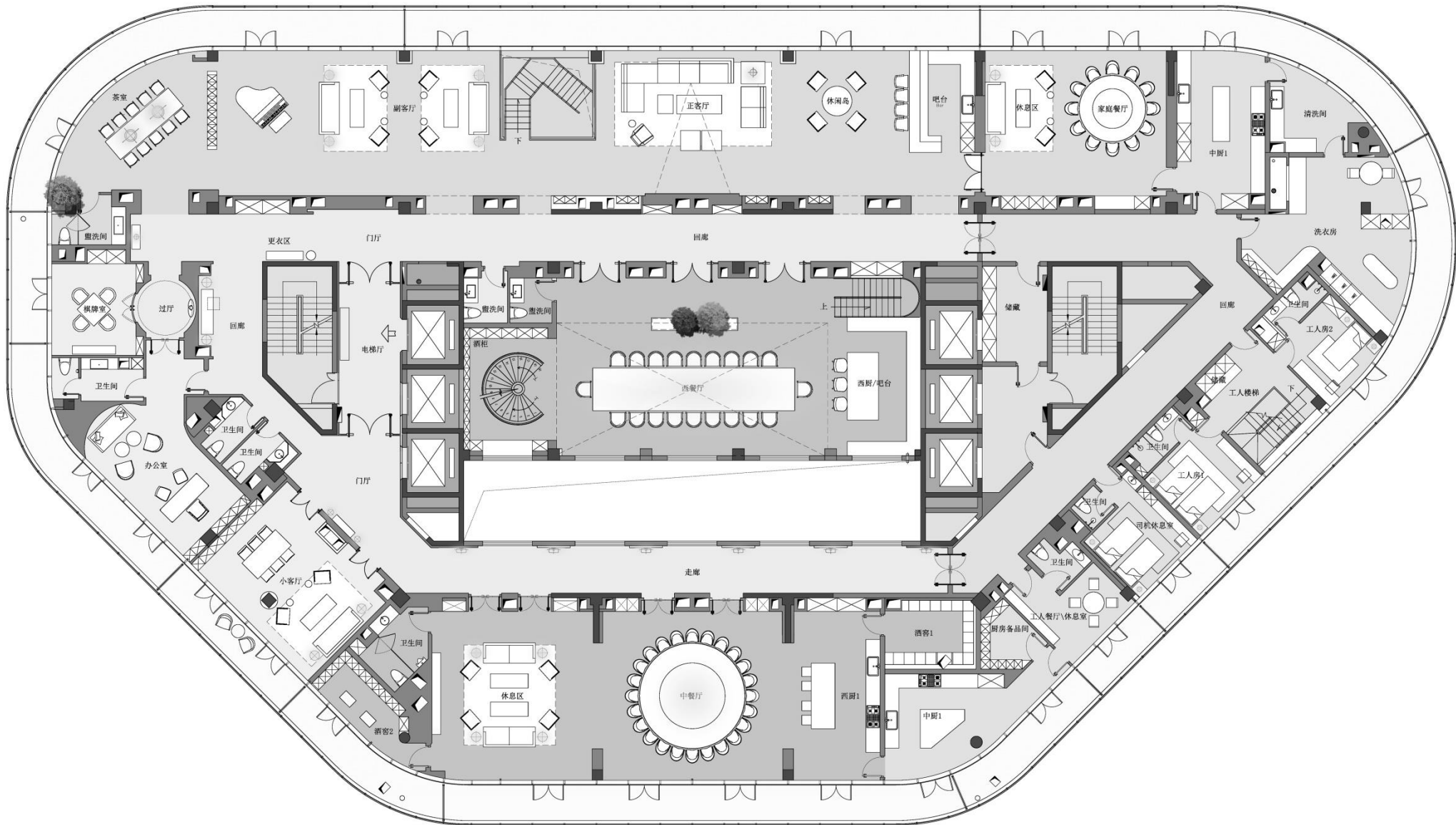


梁位分析

- 梁高800mm
- 梁高530mm
- 梁高600mm

层高：3270mm

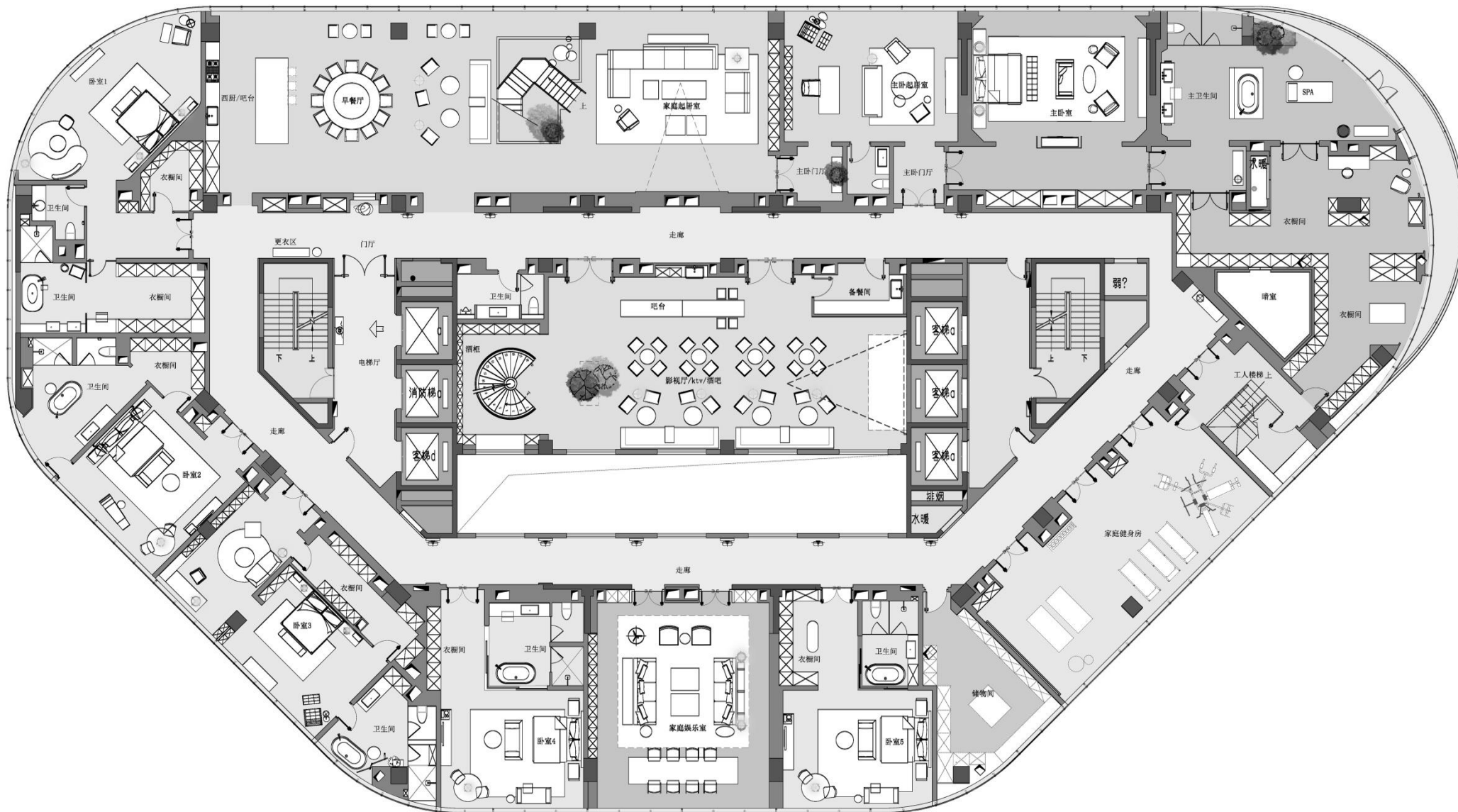
装饰梁下：2470mm 2670mm





# 二十七层

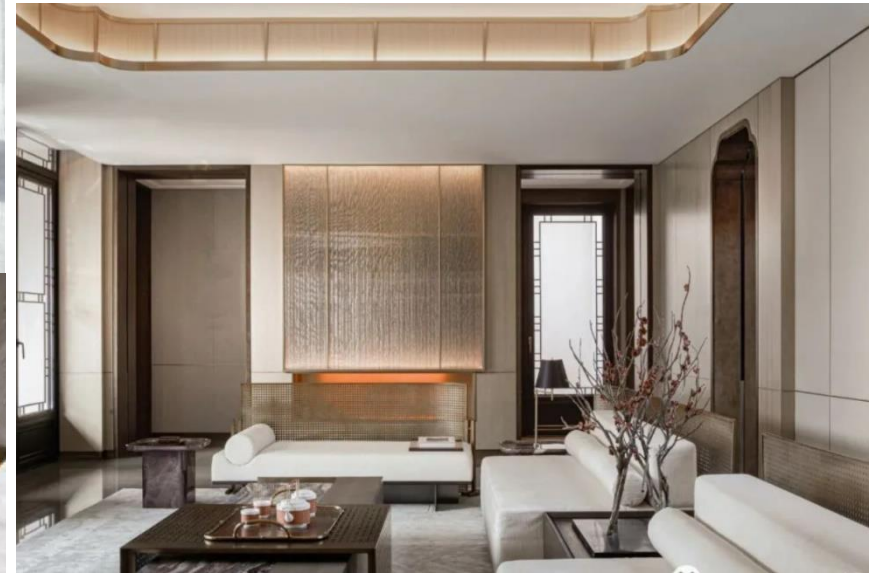
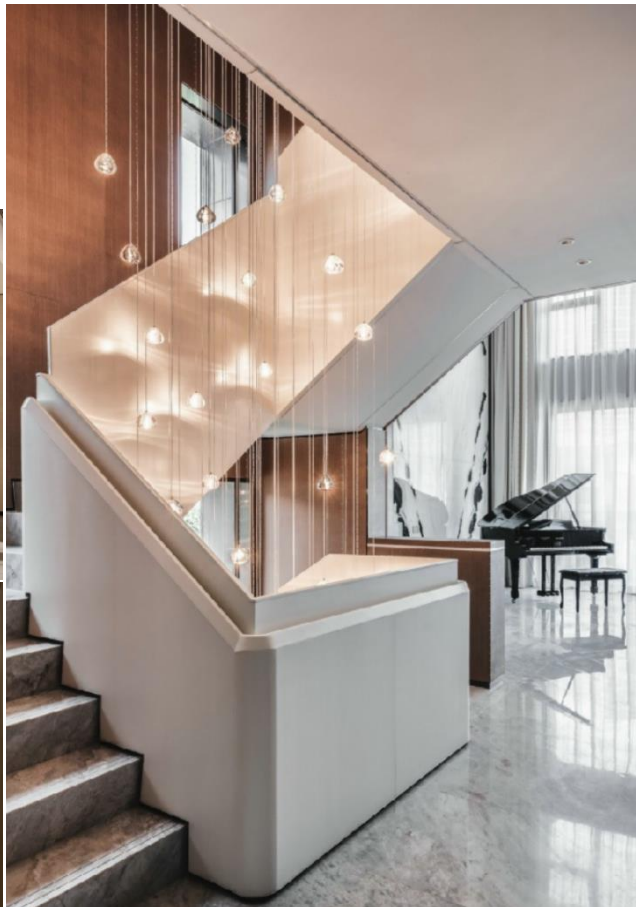
家庭层



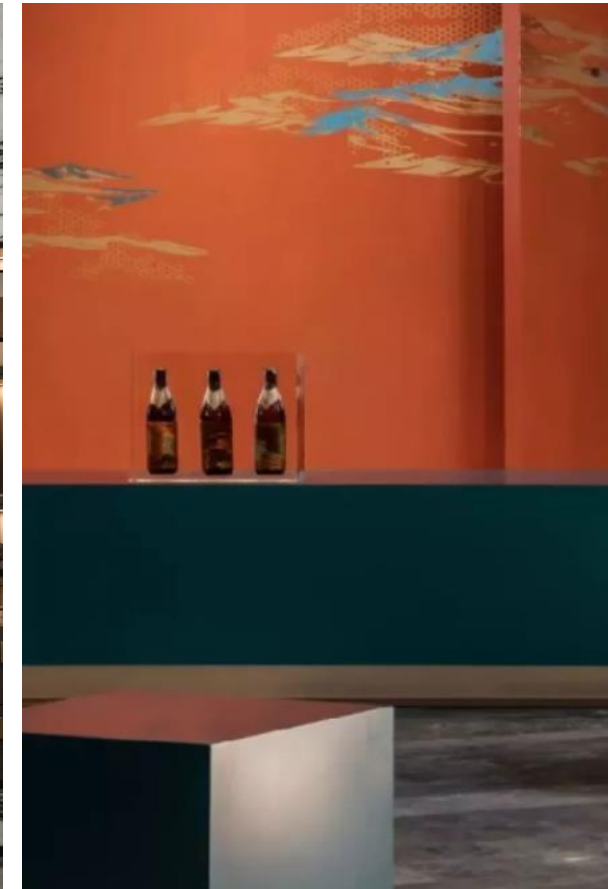
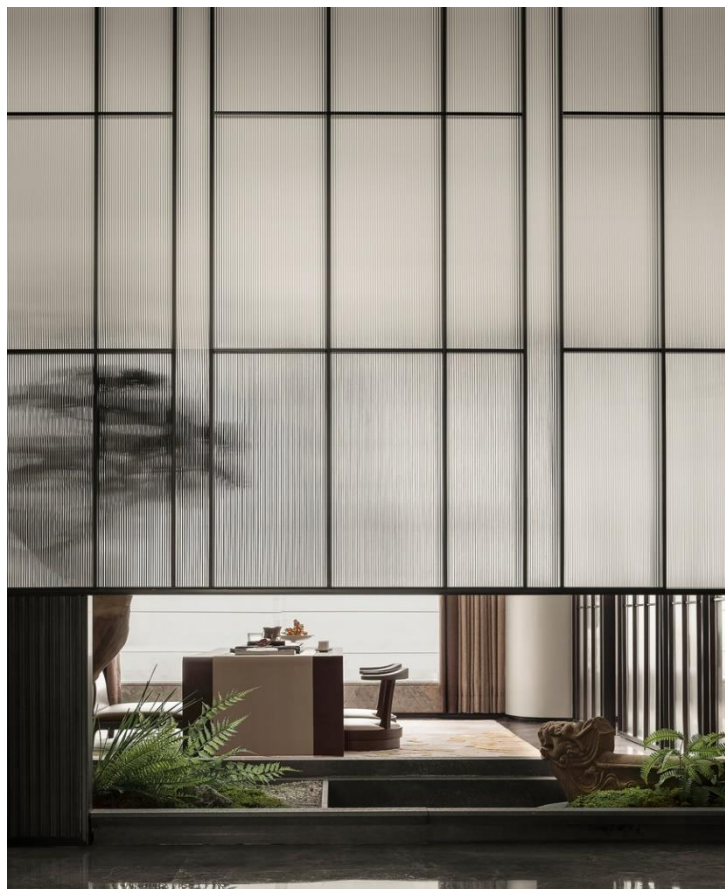
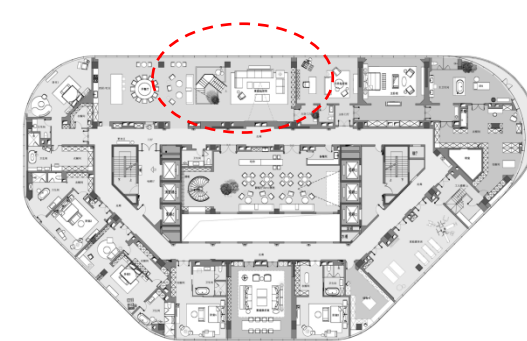


家庭厅/餐厅

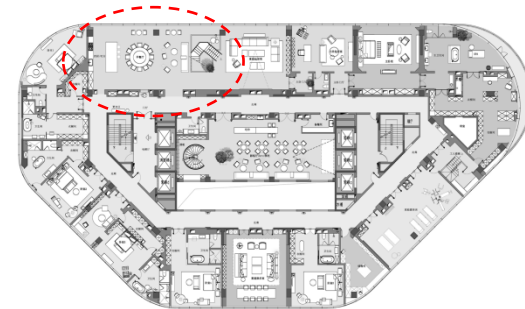
家庭起居室空间意向图



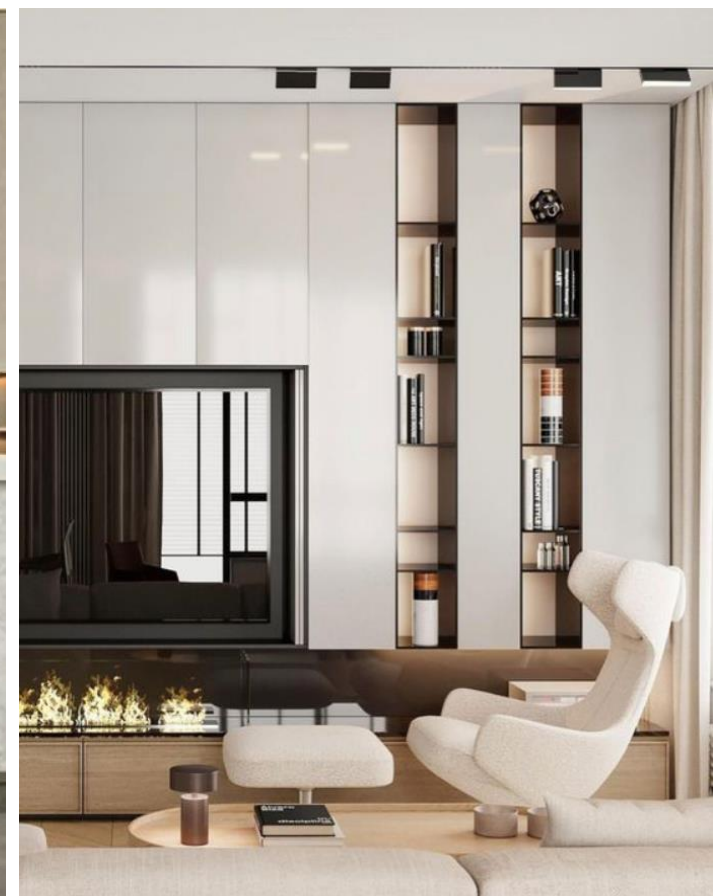
家庭起居室空间意向图



早餐厅空间意向图



早餐厅空间意向图

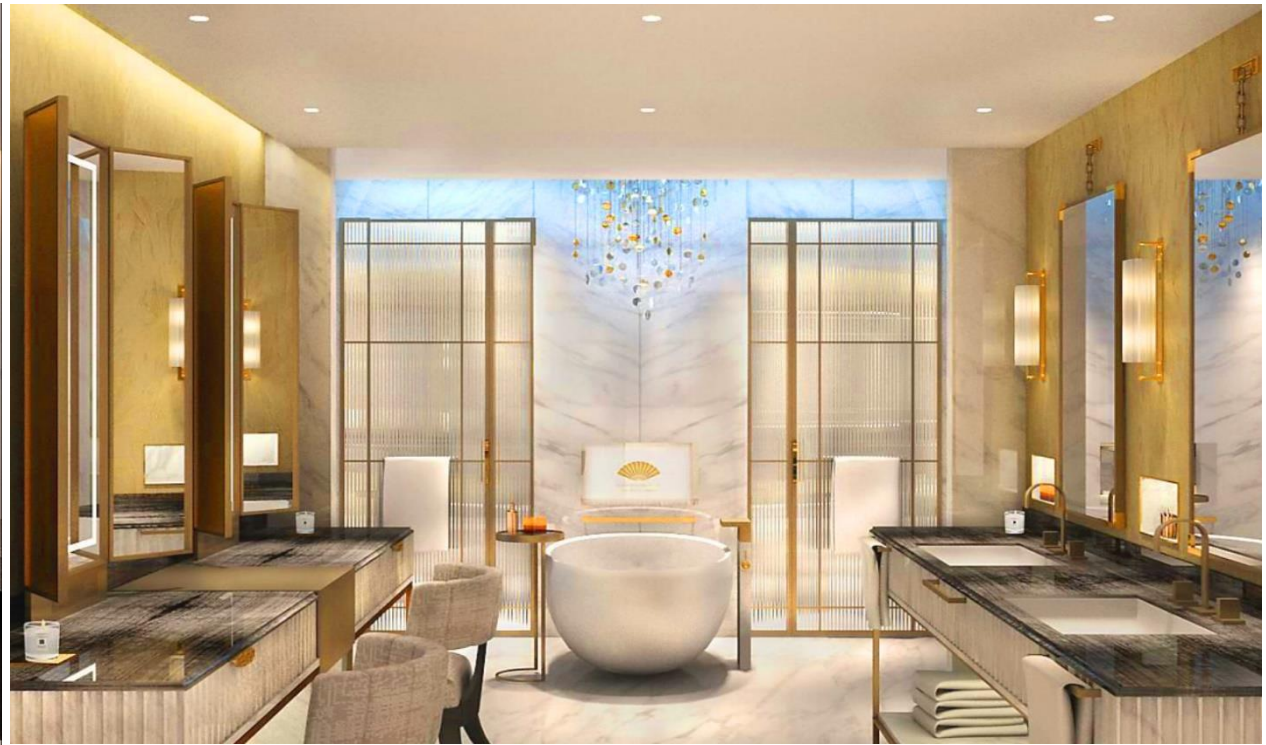
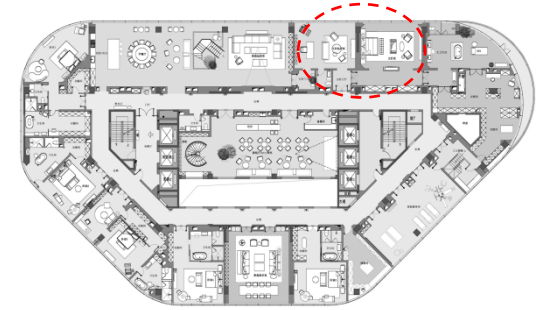


休憩

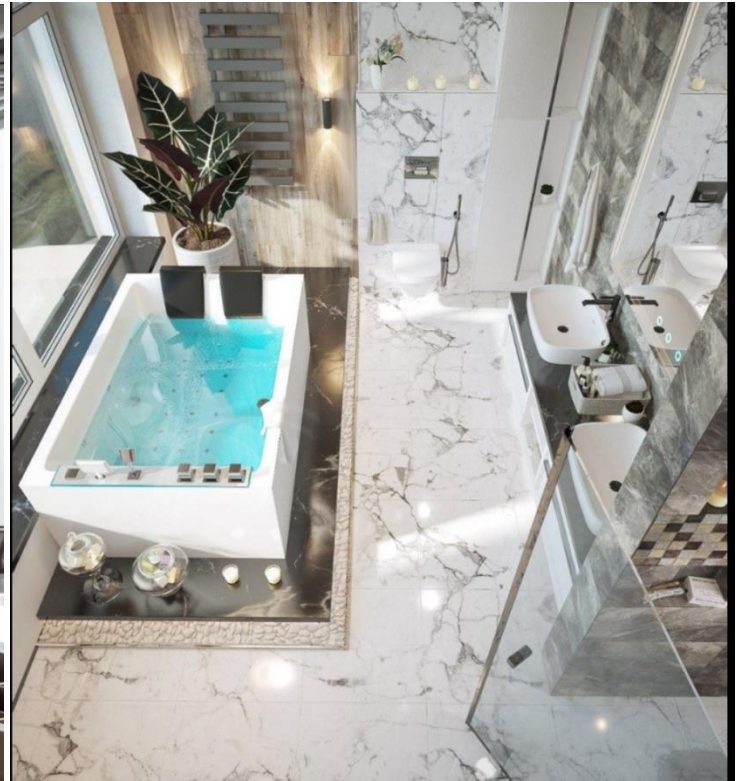
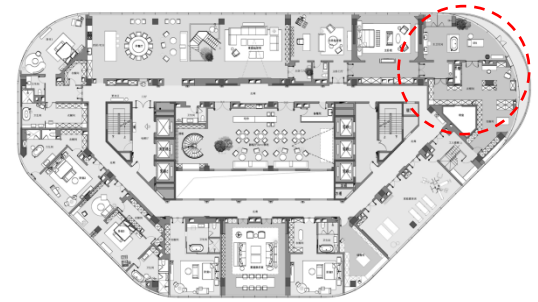


SLEEP

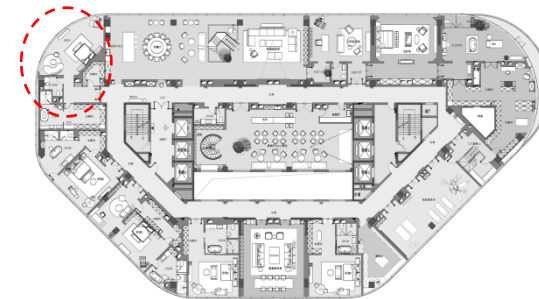
卧室空间意向图



卧室空间意向图

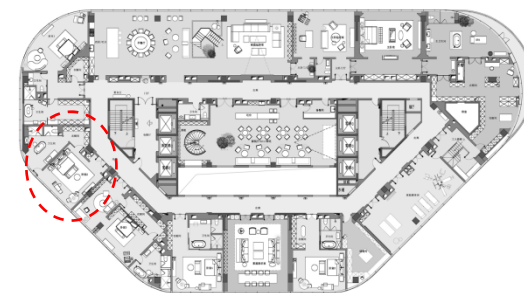


卧室空间意向图

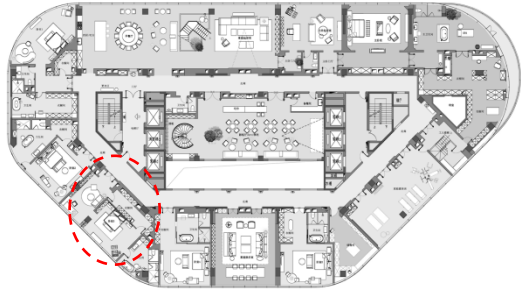




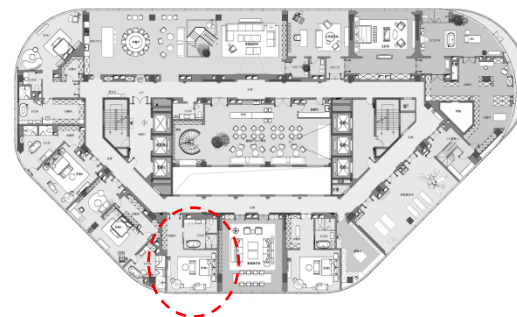
卧室空间意向图



卧室空间意向图

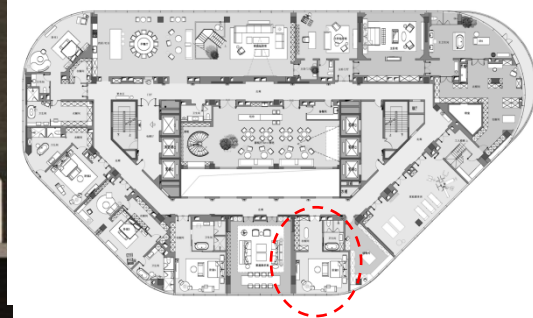


卧室空间意向图

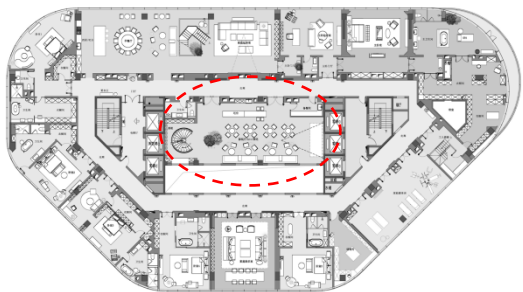


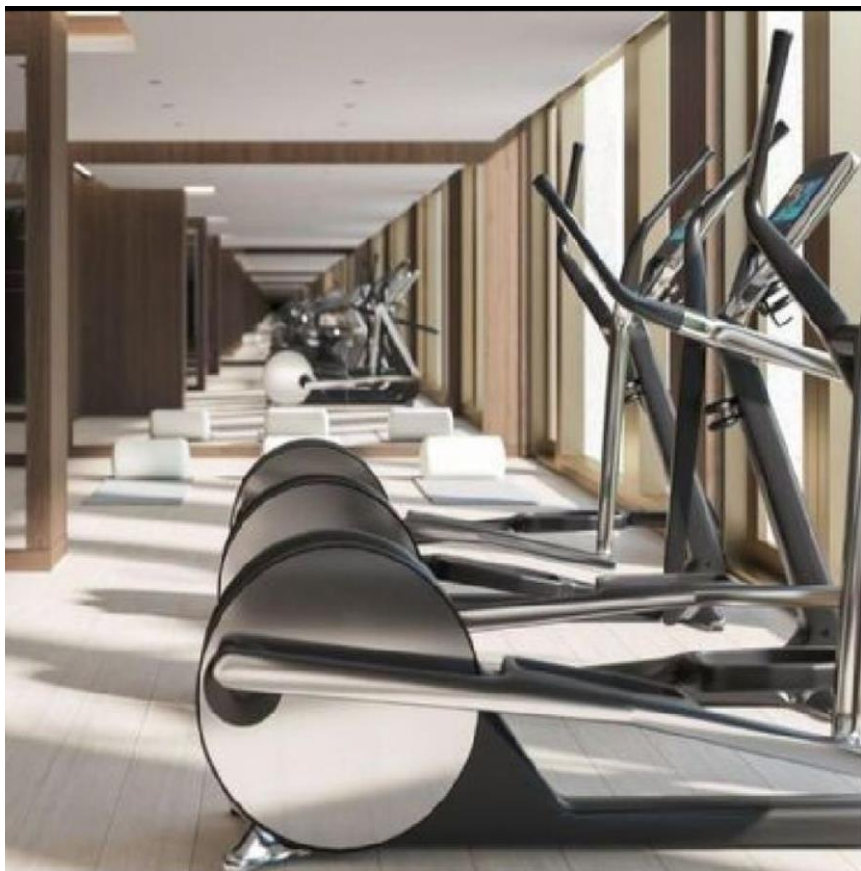


卧室空间意向图

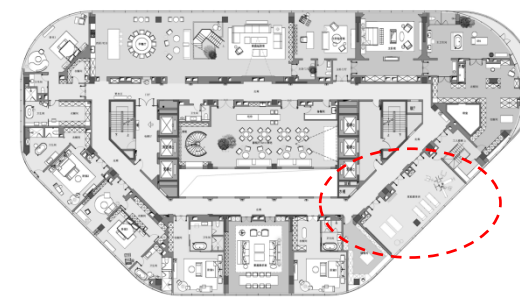


影视厅/酒吧空间意向

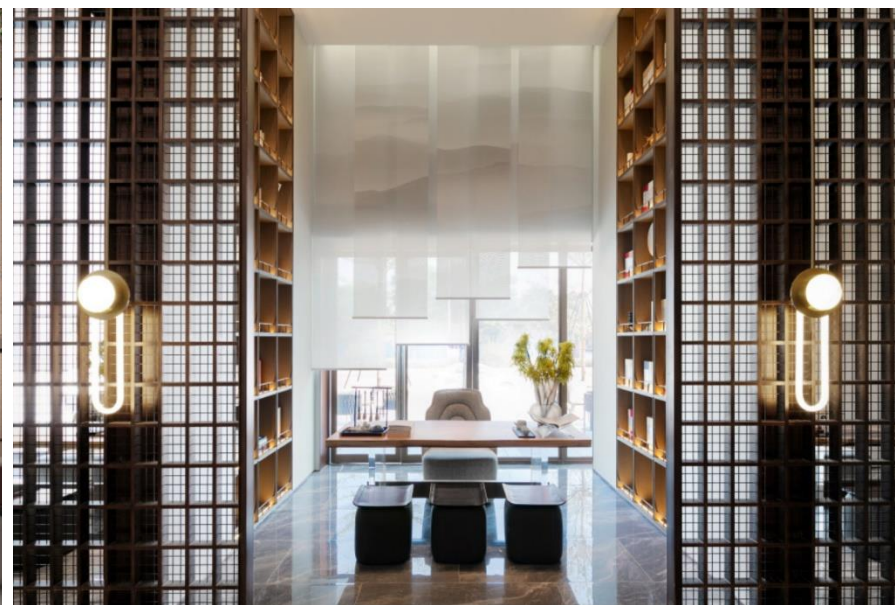
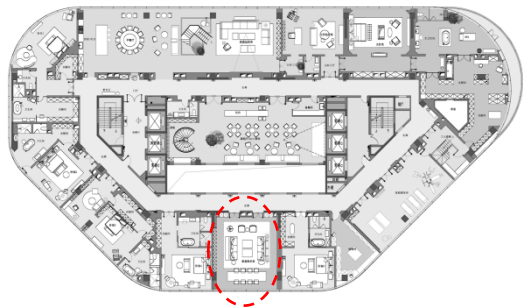




家庭健身房空间意向



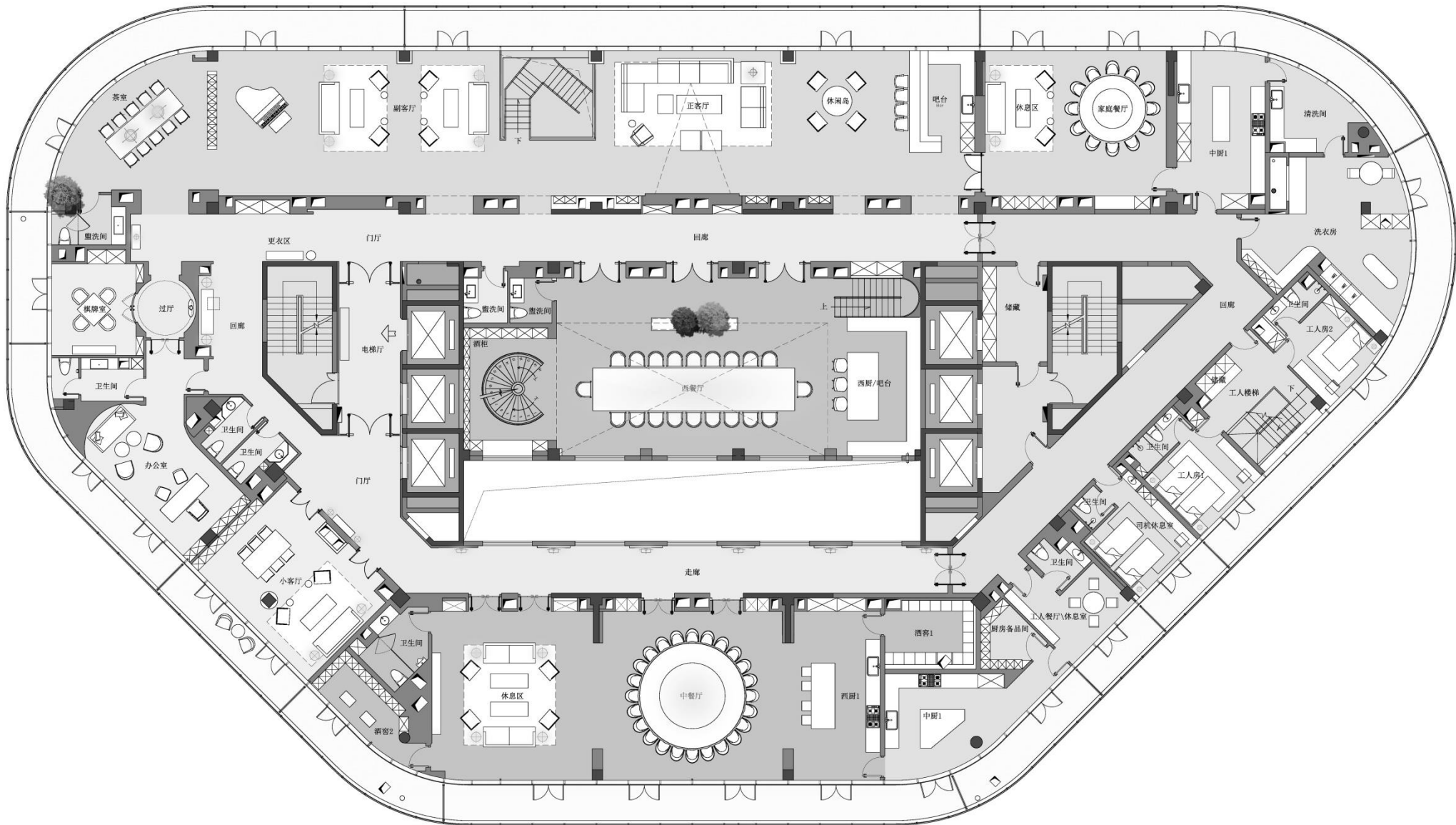
# 家庭娱乐室空间意向





# 二十八层

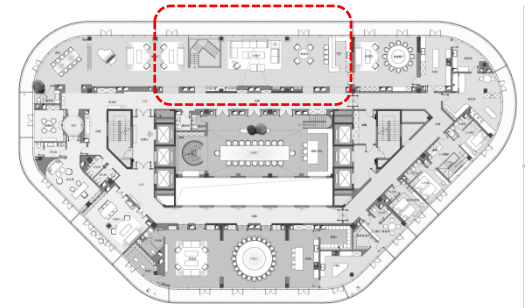
家庭会客层

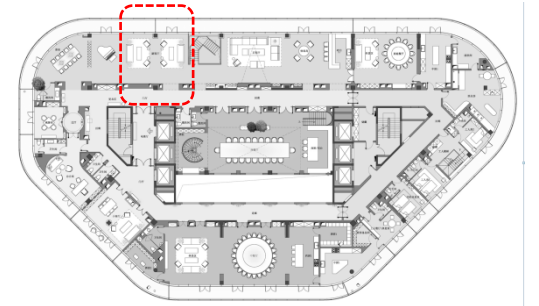


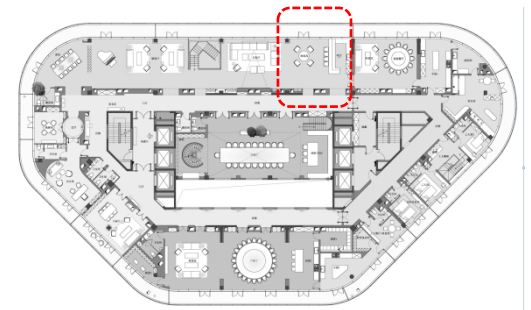
作



会客/Receive a visitor



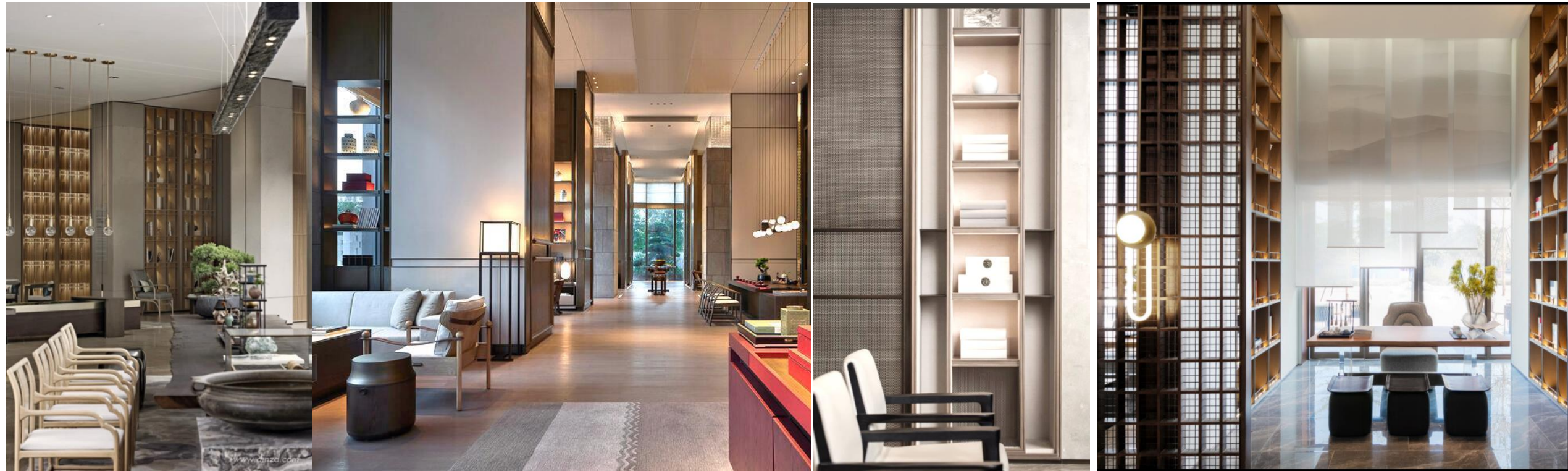
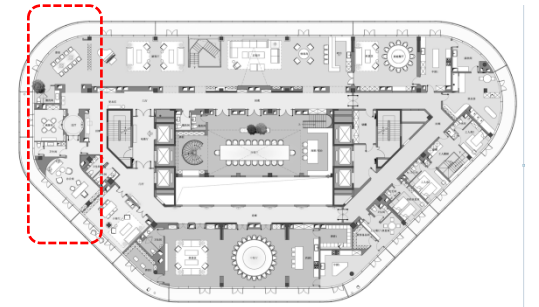




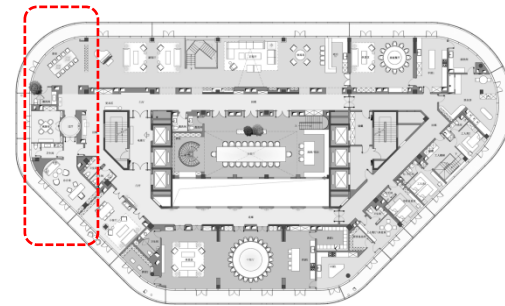


TEA

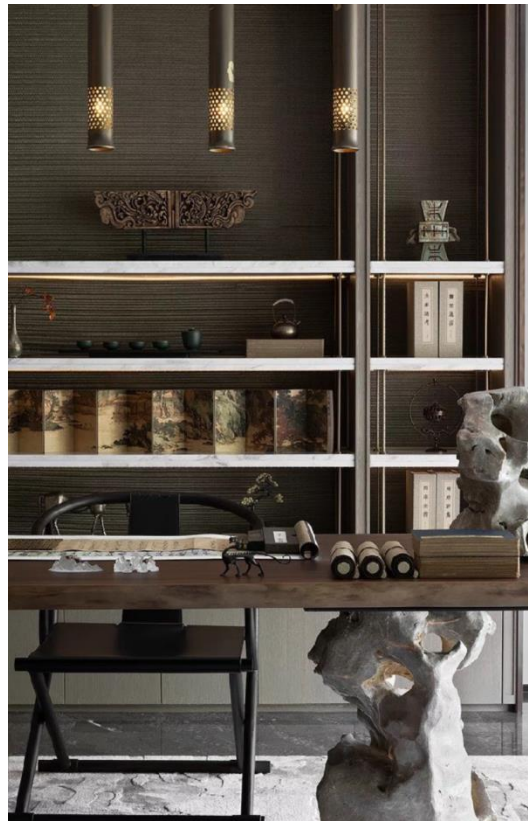
茶室意向图



茶室意向图



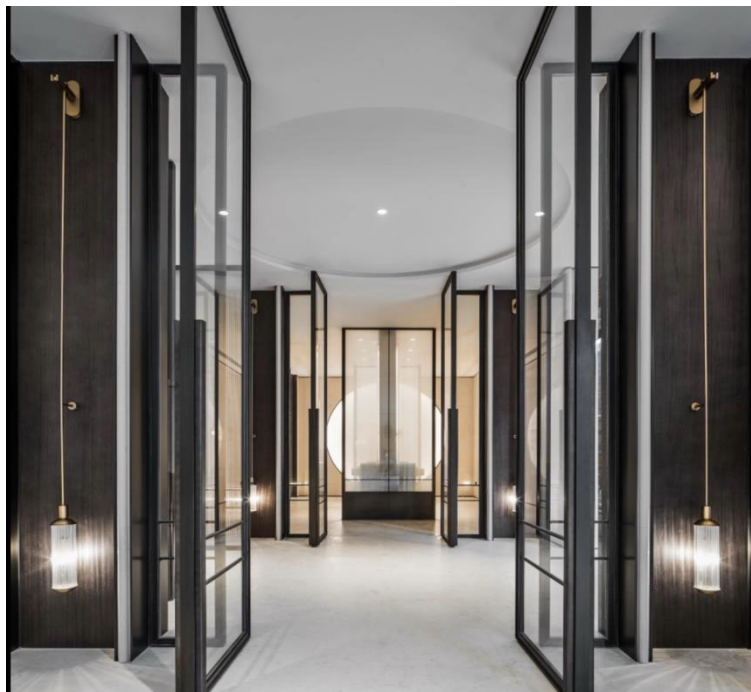
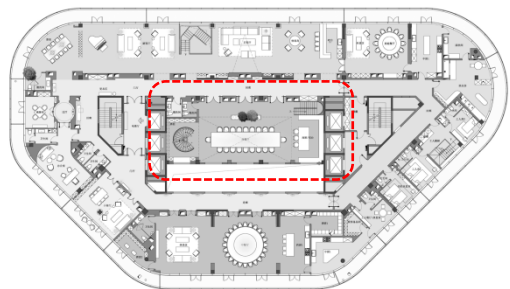
3D MAX / Corona 5.0 / PS CC  
Date of creation: December 06 2020



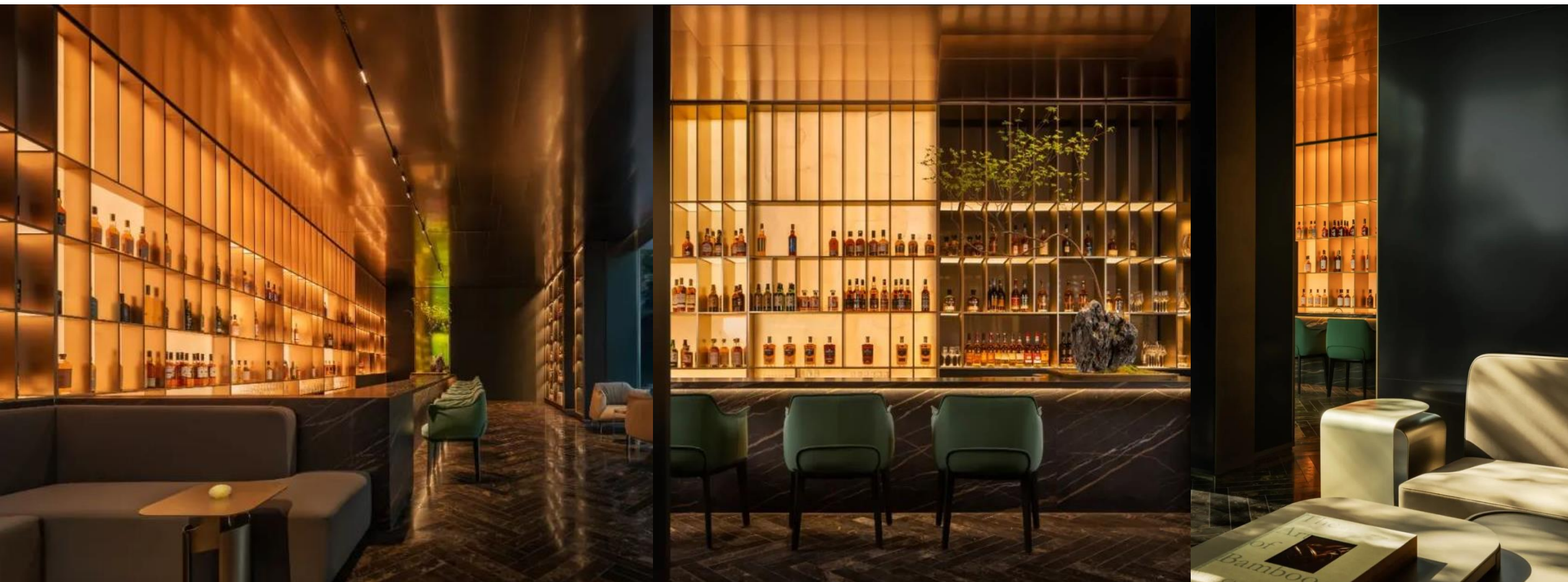
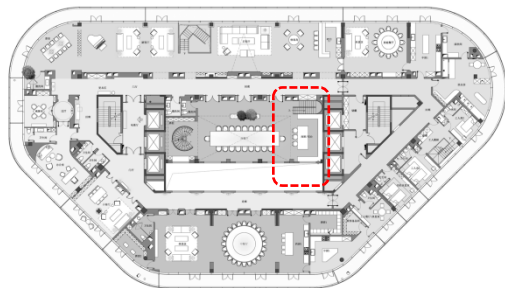


餐厅/The restaurant

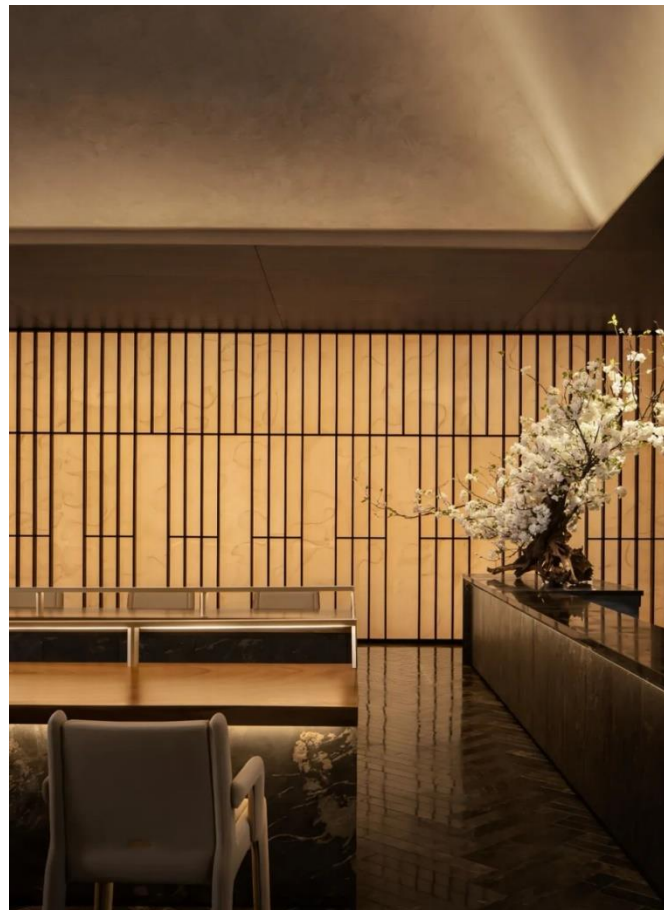
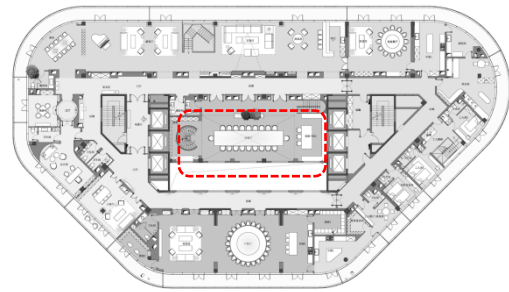
## 西餐厅



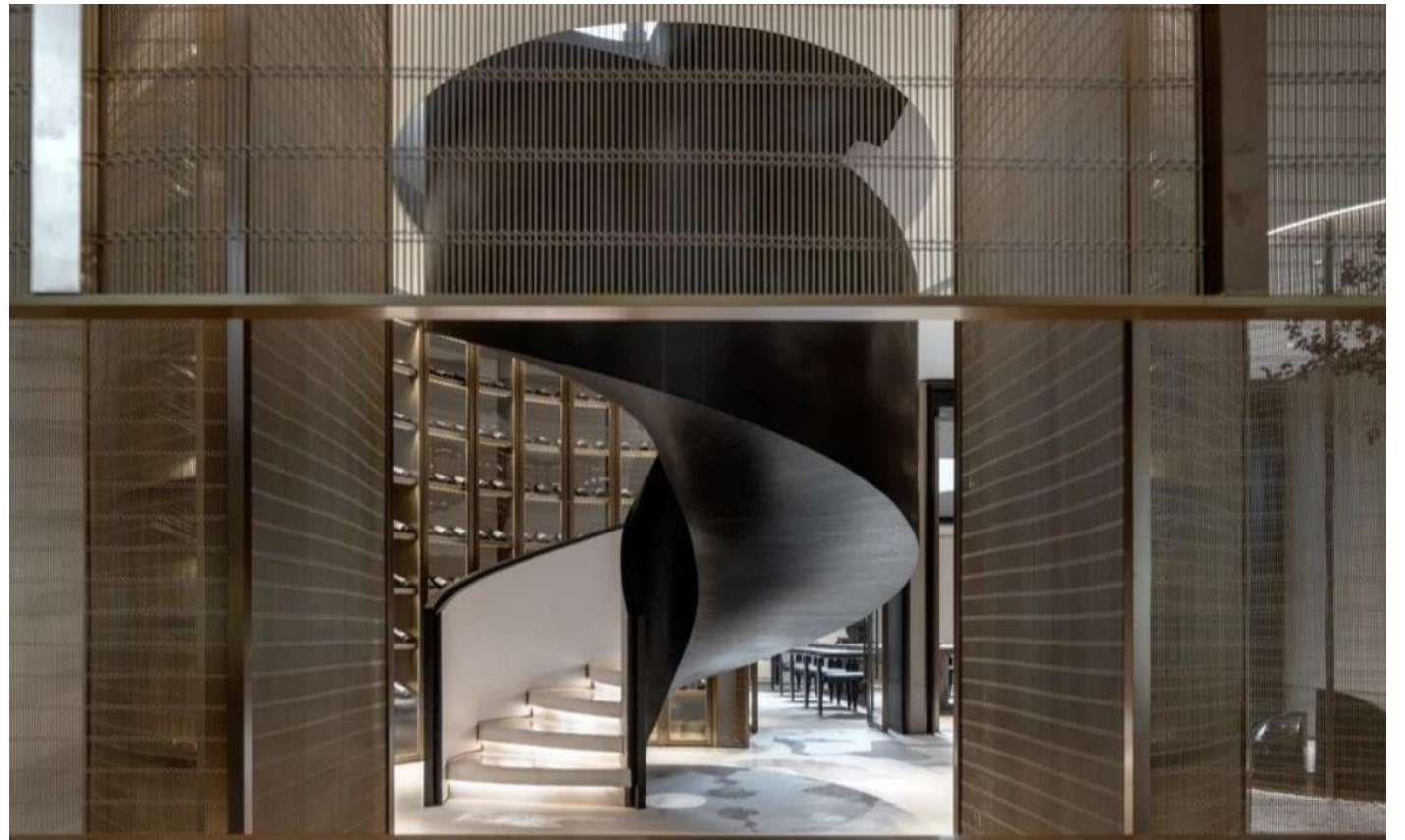
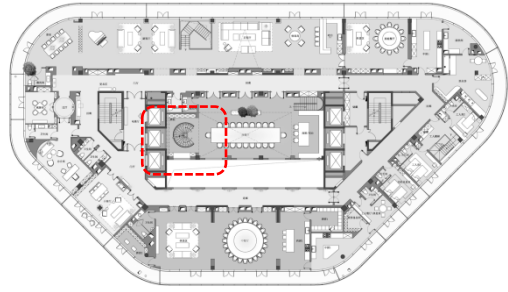
西餐厅



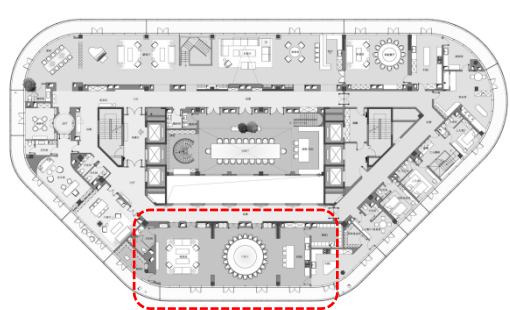
# 西餐厅



# 西餐厅



# 中餐厅



电梯及走廊



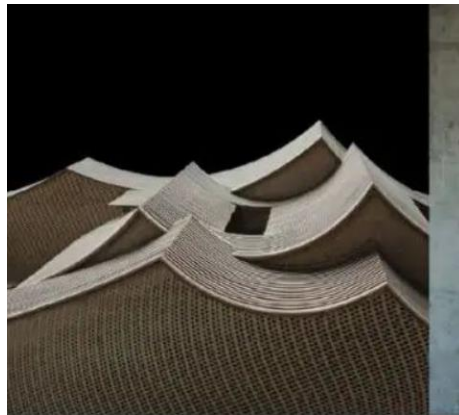
Luoyang Sky House concept design proposal

洛阳空中别墅住宅空间概念设计方案

JDID

而世 SPATIAL VISUALIZATION DESIGN

屋顶花园效果展示/



**J D I D**

北京东立玖鼎工程设计有限公司